

PARTITION NOTES:

1. ALL PARTITIONS AND FINISHES SHALL HAVE A FLAME SPREAD RATING OF 25 OR LESS AND A SMOKE DEVELOPMENT RATING OF 50 OR LESS (ASTM E-84)

2. FOR GYPSUM BOARD ASSEMBLIES INDICATED TO HAVE STC AND/OR FIRE RATINGS, PROVIDE MATERIALS AND CONSTRUCTION IN ACCORDANCE WITH ASSEMBLIES WHOSE STC AND/OR FIRE RATINGS WERE DETERMINED BY A QUALIFIED INDEPENDENT TESTING AGENCY.

3. PROVIDE ACOUSTICAL SEALANT AT ALL THROUGH PENETRATIONS OF ACOUSTICAL ASSEMBLIES AND AS NOTED ON THE DRAWINGS AS FOLLOWS: NONSAG, PAINTABLE, NON-STAINING LATEX SEALANT COMPLYING WITH ASTM C 834, EFFECTIVE IN REDUCING AIRBORNE SOUND TRANSMISSION AND WITH FLAME SPREAD AND SMOKE DEVELOPED RATINGS OF LESS THAN 25 PER ASTM E-84.

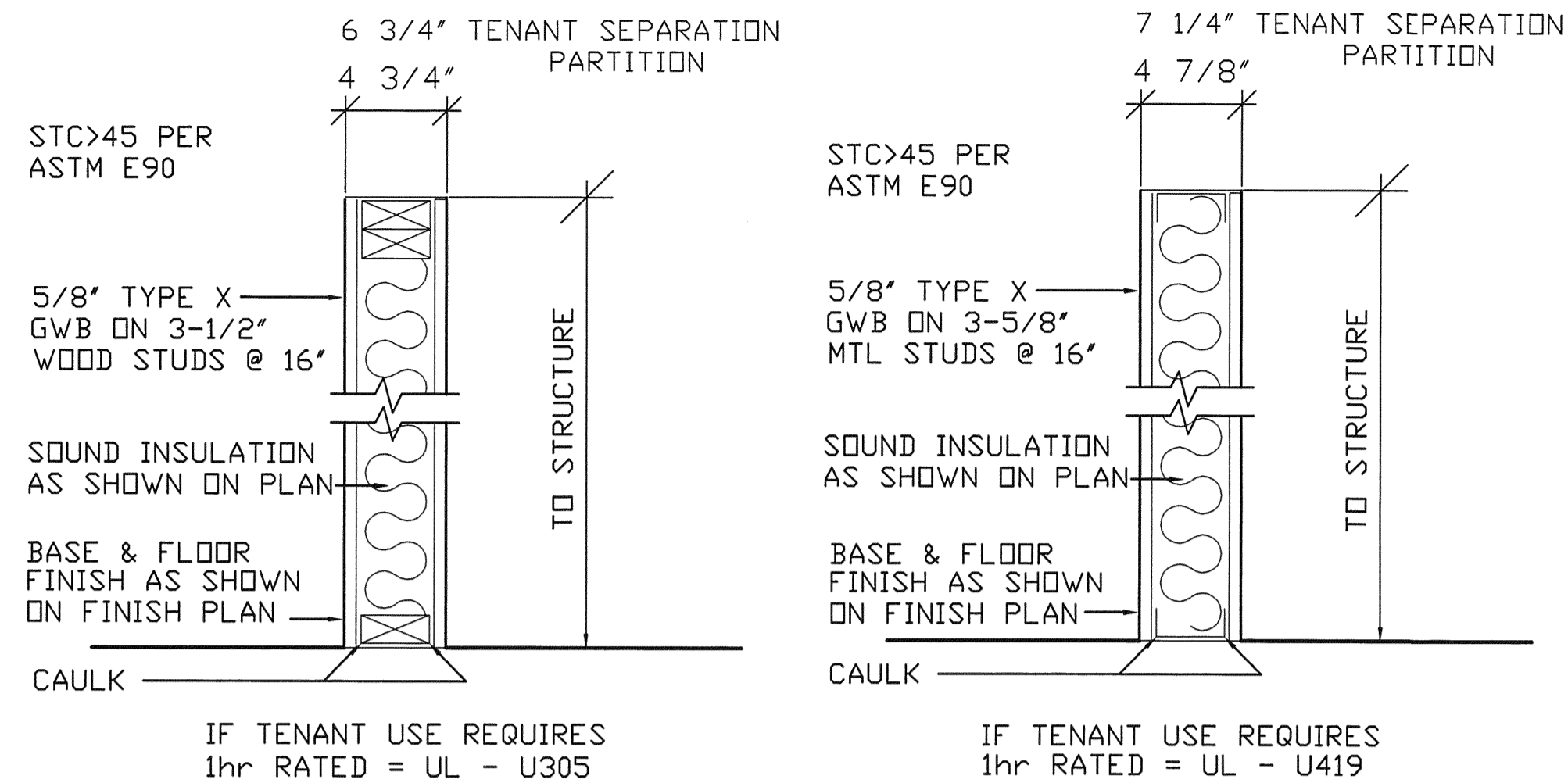
4. PROVIDE ACOUSTICAL ATTENUATION INSULATION FOR IDENTIFIED INTERIOR PARTITIONS AS REQUIRED FOR INDICATED STC RATING; INSULATION TO BE UNFACED, PRE-FORMED GLASS FIBER, FRICTION FIT.

5. PROVIDE AND SECURELY FASTEN WOOD BLOCKING AS INDICATED OR REQUIRED FOR SECURING OTHER WORK TO INCLUDE BUT NOT LIMITED TO: TOILET ACCESSORIES, CABINETS, WOOD TRIM, HARDWARE, AND FIXTURES. ALL WOOD BLOCKING SHALL BE FIRE RETARDANT TREATED.

6. PROVIDE METAL CORNER BEADS AT ALL OUTSIDE CORNERS. PROVIDE METAL 'J' BEAD AS EDGE TRIM WHERE GYPSUM BOARD ABUTS DISSIMILAR MATERIALS.

7. DO NOT INSTALL ELECTRICAL OUTLET AND SWITCH BOXES BACK TO BACK. STAGER BOXES IN ADJACENT STUD SPACES AND SEAL TOP, BOTTOM, BACK, AND SIDES WITH ACOUSTICAL SEALANT.

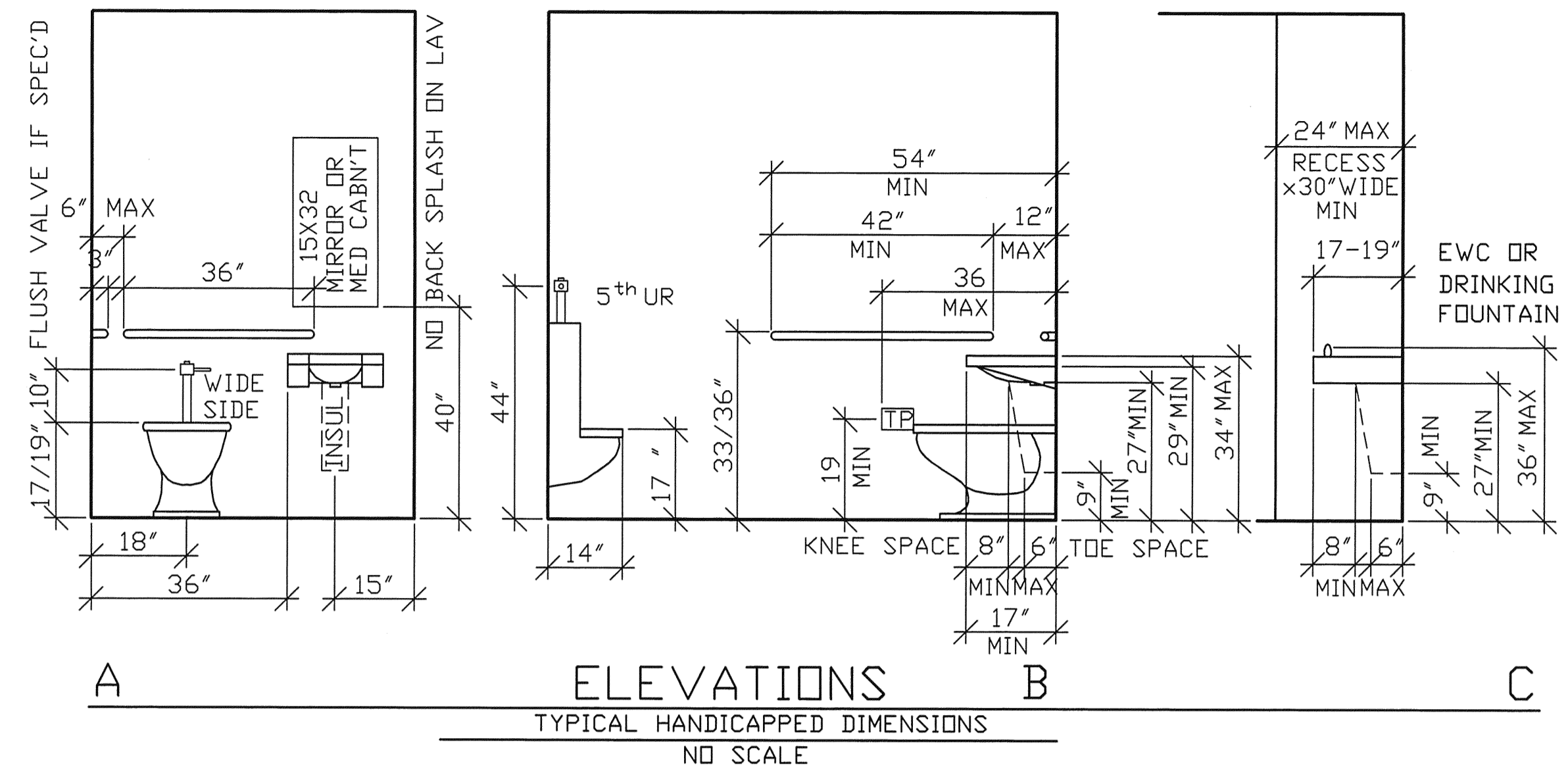
8. PARTITION SHALL BE DESIGNED AND SPECIFIED SO THE HEIGHT DOES NOT EXCEED THE MAXIMUM LIMITING HEIGHT FOR THE SIZE AND GAGE OF METAL STUD USED. REFER TO THE METAL STUD MANUFACTURER'S 'LIMITING HEIGHT TABLE.' DESIGN FOR A MAXIMUM DEFLECTION OF L/240, TYPICAL, FOR PARTITIONS INDICATED TO RECEIVE A 'BRITTLE' FINISH SUCH AS PLASTER, CERAMIC TILE, OR STONE FACING, DESIGN FOR A MAXIMUM DEFLECTION OF L/360.



TYPICAL INTERIOR PARTITION SECTION

SCALE: 1 1/2" = 1'-0"

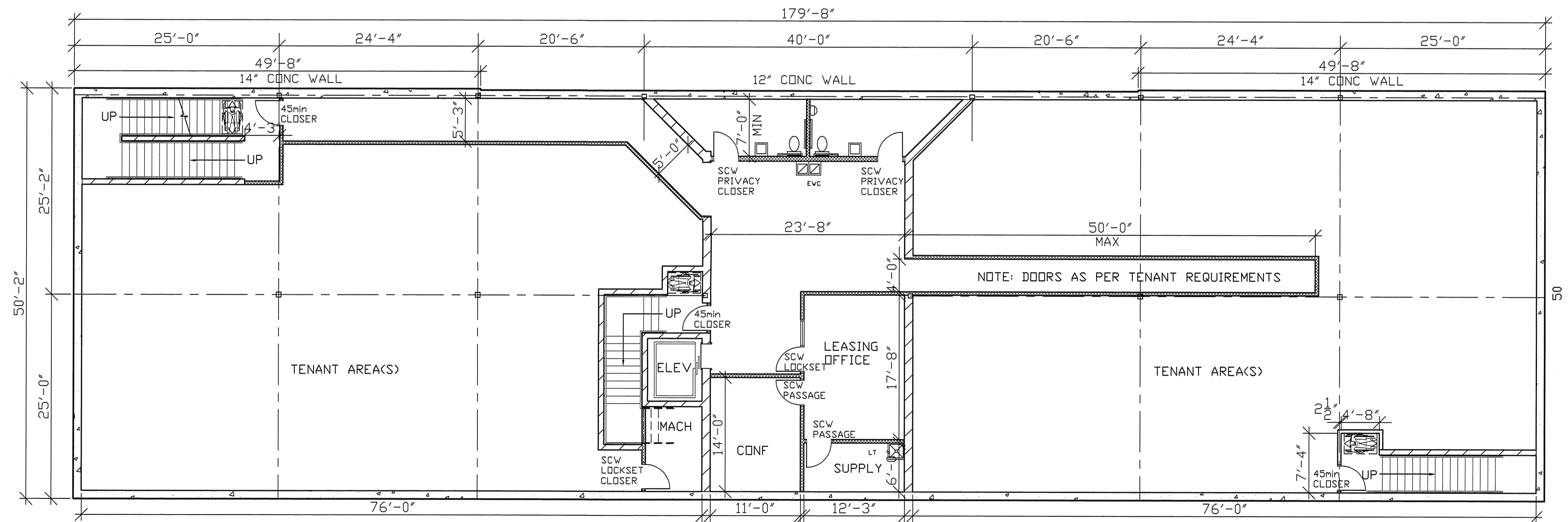
METAL / WOOD CONTRACTOR'S OPTION



PLUMBING FIXTURE SCHEDULE

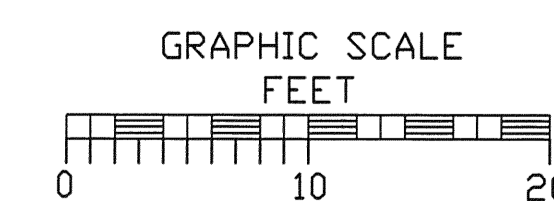
PLUMBING CONTRACTOR SHALL VERIFY ALL CODE REQUIREMENTS & BE RESPONSIBLE FOR COMPLIANCE WITH STATE & LOCAL REGULATIONS.

- WC1 GERBER AQUA SAVER 21-762 18 INCH HIGH TANK 28-790 TYPE FLOOR MOUNT WATER CLOSET W/BEMIS 2155C OPEN FRONT SEAT.
 - UR1 GERBER CLINTON URINAL 27-750 W/SLOAN 186YB REGAL FLUSH VALVE W/CARRIER
 - L1 GERBER CHINA WALL HUNG LAV 20X20 W/O BACK SPLASH, AM STD 2385.478 FAUCET W/OFFSET GRID DRAIN AND CR-1912-A ANGLE SUPPLIES, INSULATED
 - LT MUSTEE 17F FIBERGLASS FLOOR SUPPORTED LAUNDRY TUB DELTA 711WFHDF FAUCET, AM STD CR-1912-A ANGLE SUPPLIES
 - WH1 PROLINE 30gal ELECTRIC WATER HEATER E61-30H-045DV
 - FD ZURN Z-415 FLOOR DRAIN
 - EWC ELKAY EBFATL-8 DOUBLE WATER COOLER
- OWNER SHALL SUPPLY 10lb ABC FIRE EXTINGUISHERS AT 75' MAX SEPARATION
ALL MANUFACTURES AND PRODUCTS 'OR EQUAL' ADA/EBA APPROVED



ASSUMED DIMENSIONS:
ALL SHEETS - ENTIRE BLDG

INTERIOR WALLS - 5"
SEPARATION WALLS - 7"
EXTERIOR WOOD WALLS
W/BRICK FACE BRICK - 11"



BASEMENT FLOOR PLAN
SCALE: 1/8" = 1'-0" NORTH

THIS DRAWING, THE CONCEPT, IDEAS, AND INFORMATION CONTAINED HEREIN ARE THE PROPERTY OF THE ARCHITECT AND ARE NOT TO BE COPIED, REPRODUCED, OR USED IN ANY MANNER, FOR DISCUSSION, OR CONSTRUCTION WITHOUT WRITTEN PERMISSION.

PRELIMINARY UNTIL SIGNED APPROVED FOR CONSTRUCTION	
OWNER'S REP.	/ /
CONTRACTOR	/ /
ARCHITECT	/ /

REVISIONS:	/ /
/ /	/ /
/ /	/ /
/ /	/ /