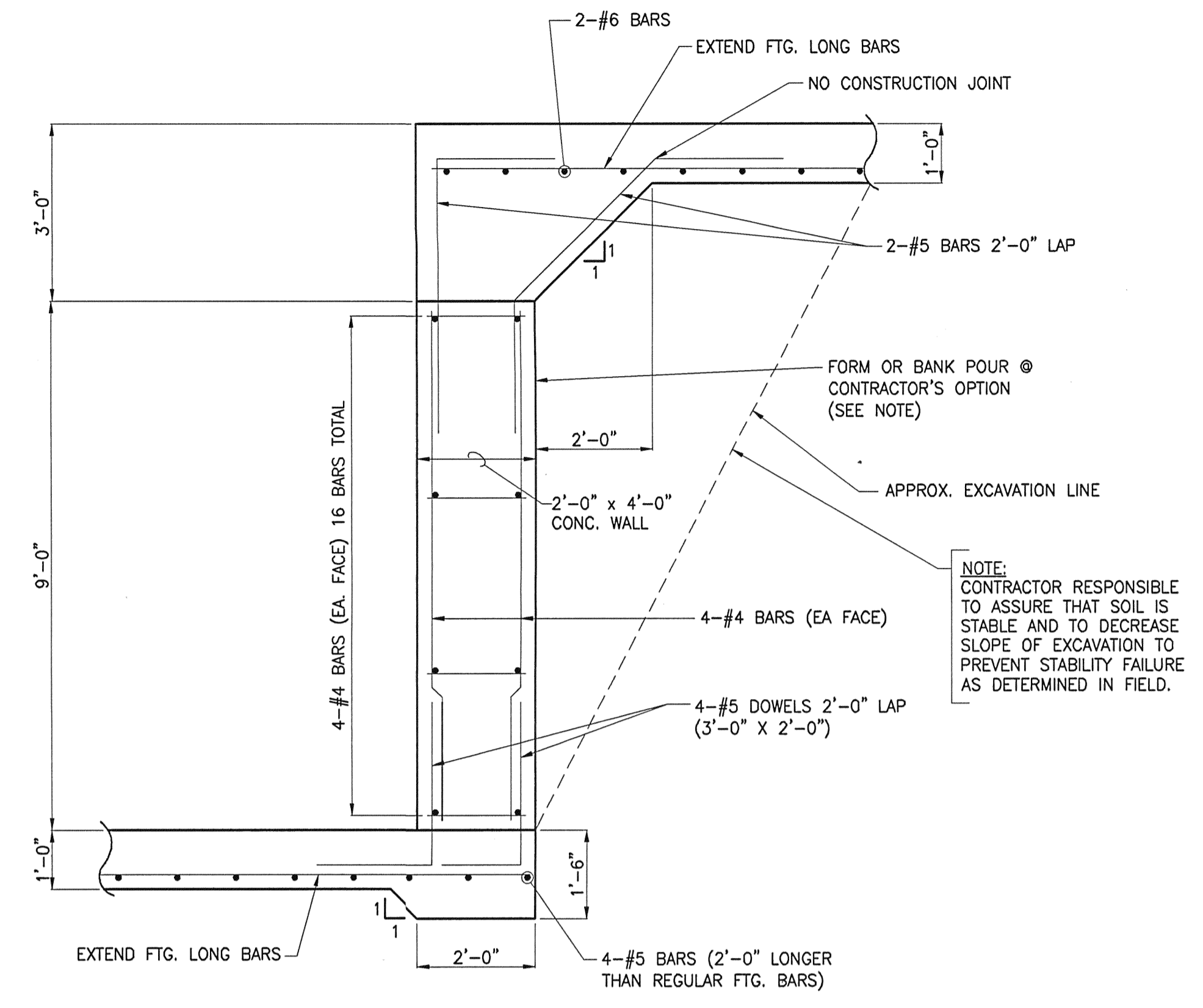
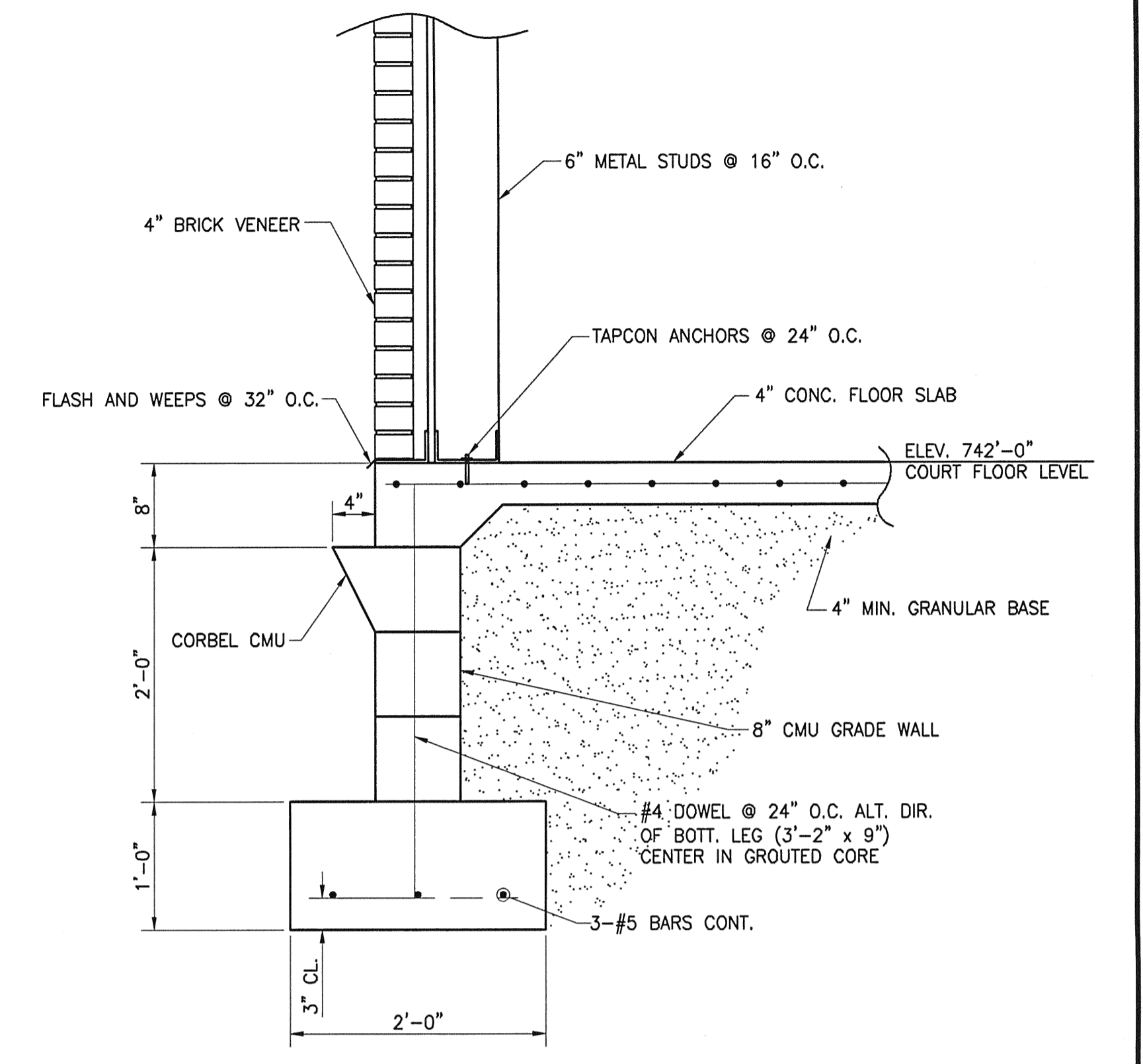


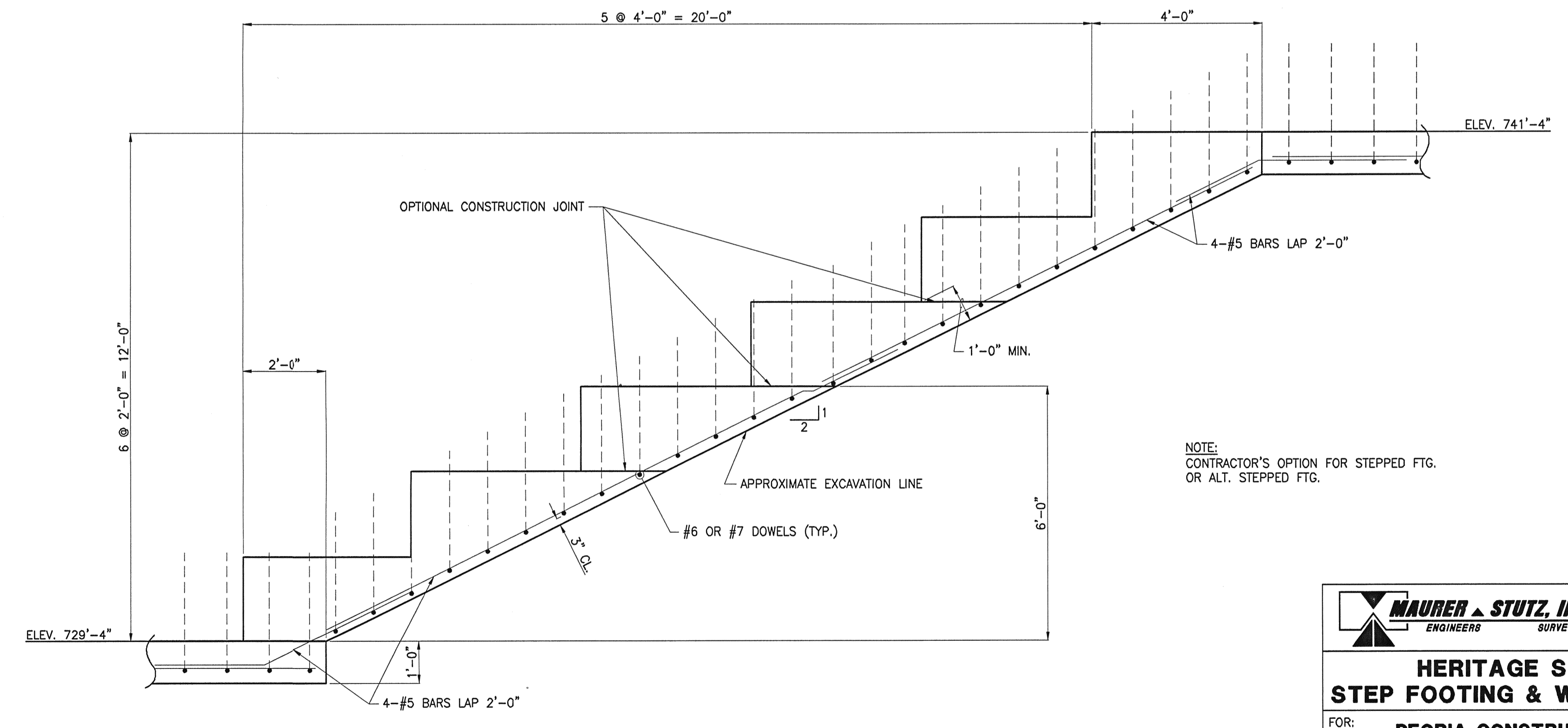
SECTION 2
SCALE: 1/2" = 1'-0"



ALTERNATE STEPPED FOOTING DETAIL
SCALE: 1/2" = 1'-0"



TYPICAL FOUNDATION FOR COURTYARD WALLS
SCALE: 1" = 1'-0"



STEPPED FOOTING DETAIL
SCALE: 1/2" = 1'-0"

NOTE:
CONTRACTOR'S OPTION FOR STEPPED FTG.
OR ALT. STEPPED FTG.

MAURER & STUTZ, INC.
ENGINEERS SURVEYORS
7615 NORTH HARKER DRIVE
PEORIA, ILLINOIS 61615
PH. (309) 693-7615
FAX (309) 693-7616

**HERITAGE SQUARE
STEP FOOTING & WALL DETAILS**

FOR: **PEORIA CONSTRUCTION CO.**

REVISIONS	DATE	PROJECT NO.
	6/14/04	233-04032
	DESIGNED KEF	DRAWING NO.
	CHECKED LVT	S-12
	DRAWN BRW	SHEET
	CHECKED DLM	OF

S:\33\33304032\451 DETAIL & DWG