

## Addendum

---

Containing: Pages: 3                      **Addendum Number:** 03  
                 Drawings: 28                      **Project Title:** HARRISON HOMES REDEVELOPMENT-PHASE II  
                 Schedules:                                      Project #: 0090282.00  
   Addendum Issue Date: 5 Aug 2009  
   Contract Documents Issue Date: 13 Jul 2009

*This addendum amends the drawings and specifications of the above referenced project and is hereby incorporated into the contract documents as part thereof.*

### General

1. Add attached "American Recovery and Reinvestment Act Buy American Requirements" form to the specifications after Section 00300. **The completed ARRA form must be turned in with your bid.**
2. Clarification: The Bid form has two base bids, those will then be totaled and **only one contract will be awarded for the entire project. The base bids will not be broken apart.**
3. Clarification: The stair finishes can be found on Sheet A6.1 in the stair details; the risers are painted and the treads are stained and varnished. This applies to all stairs in the project.

### Specifications

1. Section 01010 – Summary of Work item 1.7B Delete "not". **This project is tax exempt.**
2. Section 07460 – Clarification: the width for the Dutch lap basis of design is 5", and for the alternate deduct straight lap is 4". A width of 4.5" - 5.5" for the Dutch lap and a width of 4" - 4.5" for the straight lap is acceptable. The width is required to be consistent for entire project under the base bid. The insulation is required to be adhered to the vinyl.
3. Section 096500 – Clarification: Basis of design for the base bid shall be Azrock by Tarkett - Cortina Stone Vinyl Enhanced Tile or equal, as approved by the architect. Basis of Design for Residential Construction Alternate Deduct No. 2 and No. 4, shall be Armstrong - Standard EXCELON Imperial Texture. All colors are to be selected by the architect from the manufacturers' standard colors.

### Drawings

1. Drawing L1.0 - Substitute all PICOM-6 (Picea omorika – Serbian Spruce) on sheet L1.0 with TAXDI-M2.5 (Taxodium distichum 'Michelson' – Shawnee Brave Bald Cypress) sized at 2.5" diameter. All locations to remain the same.
2. Drawing C3.0 –
  - a. Revise sanitary sewer to serve the Office/Maintenance and Single Apartments buildings. Sewer shall be 240LF 8" PVC SDR 21 @ 2.60% as shown on the attached Supplemental Drawing SD02(C3.0). Sanitary services to the Office/Maintenance and Single Apartments buildings shall be 6" PVC.
  - b. Clarification: Fire and domestic water services to the Office/Maintenance building shall cross below the 8" sanitary sewer with 18" minimum clearance.

- c. Drawing C3.0 – Clarification to Note 12: If a sewer lateral is located, the contractor shall immediately notify the engineer/owner. Contractor will be responsible for televising the lateral per Greater Peoria Sanitary District requirements prior to a determination being made on the use of the lateral.
  
3. Drawing E0.1 – Added symbol for Door Bell System
4. Drawing E1.1 – Added keyed note #2
5. Drawing E1.2a – Added door bell system to each apartment.
6. Drawing E1.2b – Added door bell system to each apartment.
7. Drawing E1.3a – Added door bell system to each apartment. Added type C luminaire at both exterior doors entering the stairs.
8. Drawing E1.3b – Added light switch in bathroom in apartment 204. Added door bell system in each apartment.
9. Drawing E1.4a – Added door bell system in each unit. Added general note #1. Added lighting to storage rooms outside each unit.
10. Drawing E2.1 – Added schedule for MDPA. Revised main breaker in MDPA Revised breaker for Panel LPB. Updated Feeder schedule.
11. Drawing E2.2 – Added schedules for MDPB and MDPC. Revised feeder call out on feeder for MDPB. Revised main circuit breaker in MDPB and MDPC. Updated feeder schedules.
12. Drawing E3.1 – Changed type C luminaire to 60W.
13. Drawing E3.3 – Revised feed to panelboards A, B, C, LPB, and LPC to be MLO @ Bottom. Added arc fault breakers to panels A, B, C, LPB, and LPC. Revised main rating of Panelboard LPB to 100A.

**AMERICAN RECOVERY AND REINVESTMENT ACT**  
**BUY AMERICAN REQUIREMENTS**

**BUY AMERICAN** Section 1605 of the Recovery Act provides-

Use of American Iron, Steel, and Manufactured Goods.

(a) None of the funds appropriated or otherwise made available by this Act may be used for a project for the construction, alteration, maintenance, or repair of a public building or public work unless all of the iron, steel, and manufactured goods used in the project are produced in the United States.

(b) Subsection (a) shall not apply in any case or category of cases in which the head of the Federal department or agency involved finds that--

(1) applying subsection (a) would be inconsistent with the public interest;

(2) iron, steel, and the relevant manufactured goods are not produced in the United States in sufficient and reasonably available quantities and of a satisfactory quality; or

(3) inclusion of iron, steel, and manufactured goods produced in the United States will increase the cost of the overall project by more than 25 percent.

(c) If the head of a Federal department or agency determines that it is necessary to waive the application of subsection (a) based on a finding under subsection (b), the head of the department or agency shall publish in the Federal Register a detailed written justification as to why the provision is being waived.

(d) This section shall be applied in a manner consistent with United States obligations under international agreements.

The Office of Management and Budget (OMB) issued Interim Final Guidance for several aspects of ARRA, including the Buy American Requirement under Section 1605. The full text of this Guidance is at

<http://edocket.access.gpo.gov/2009/pdf/E9-9073.pdf>.

If unable to use American goods in the execution of the project, Contractor responsible for citing one of the reasons listed above along with an explanation and supportive documentation for review. A waiver must be executed prior to incorporation into project.

Bidder certifies to abide by the Buy American contract requirement. Successful contractor shall be required to provide procurement, costs documentation, and verify manufacture location of all iron, steel, and manufactured goods used in the construction, alteration, maintenance, and/or repair of the project.

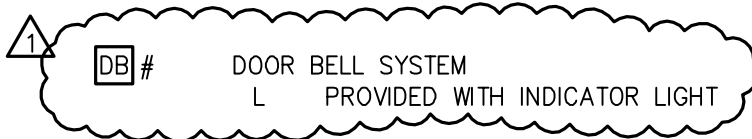
\_\_\_\_\_  
**Company Name**

\_\_\_\_\_  
**Authorizing Signature**

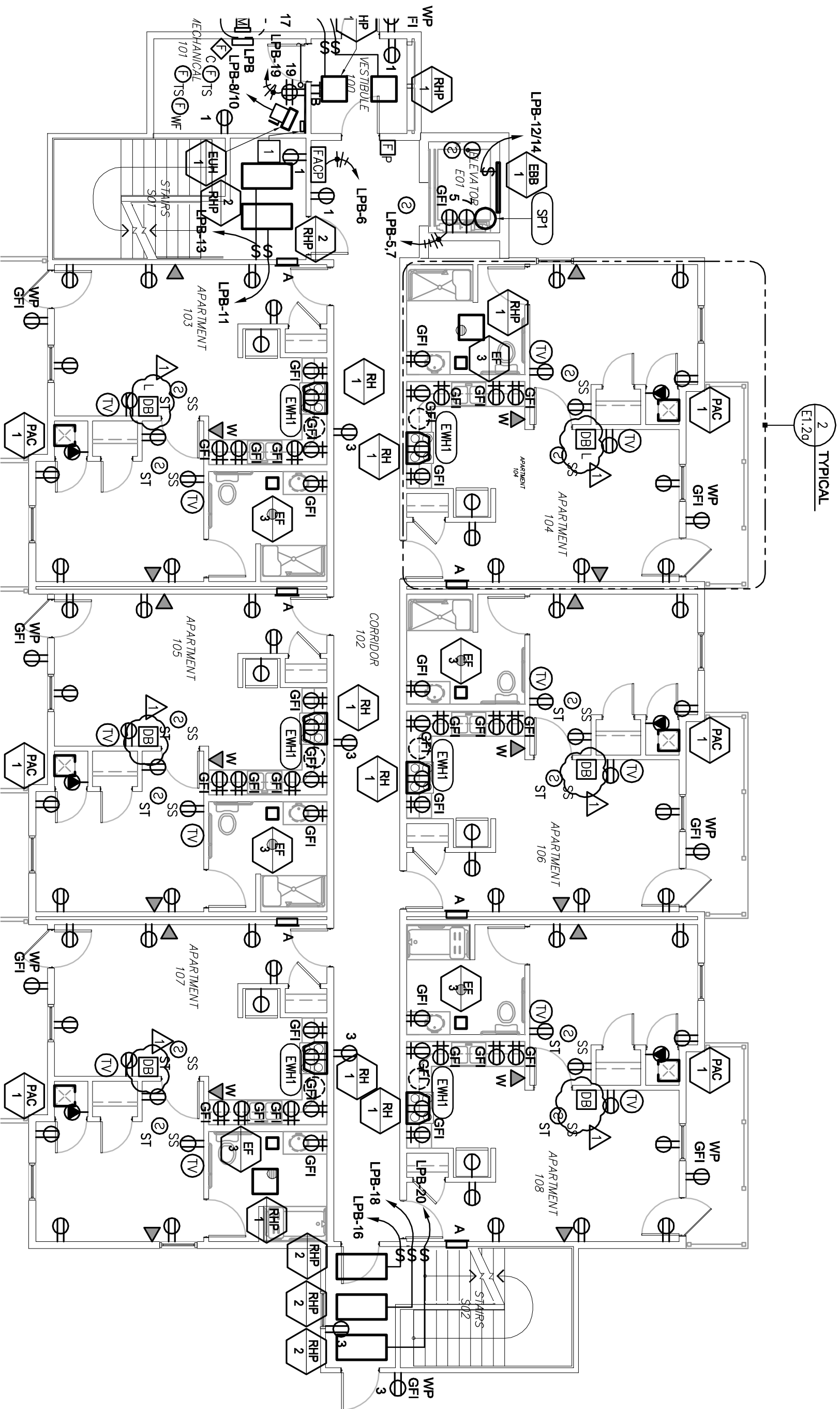
\_\_\_\_\_  
**Date**



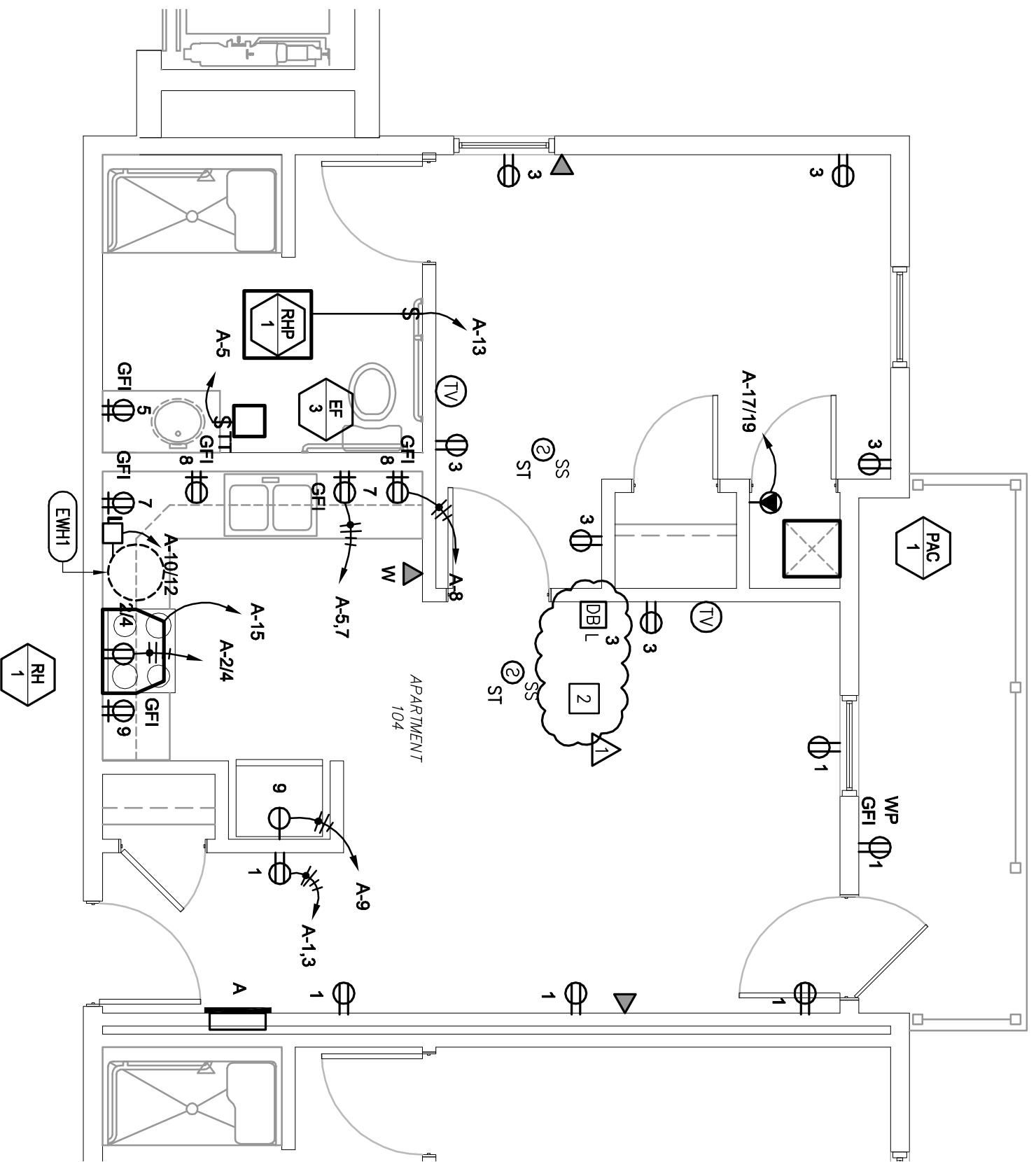
POWER SYMBOLS





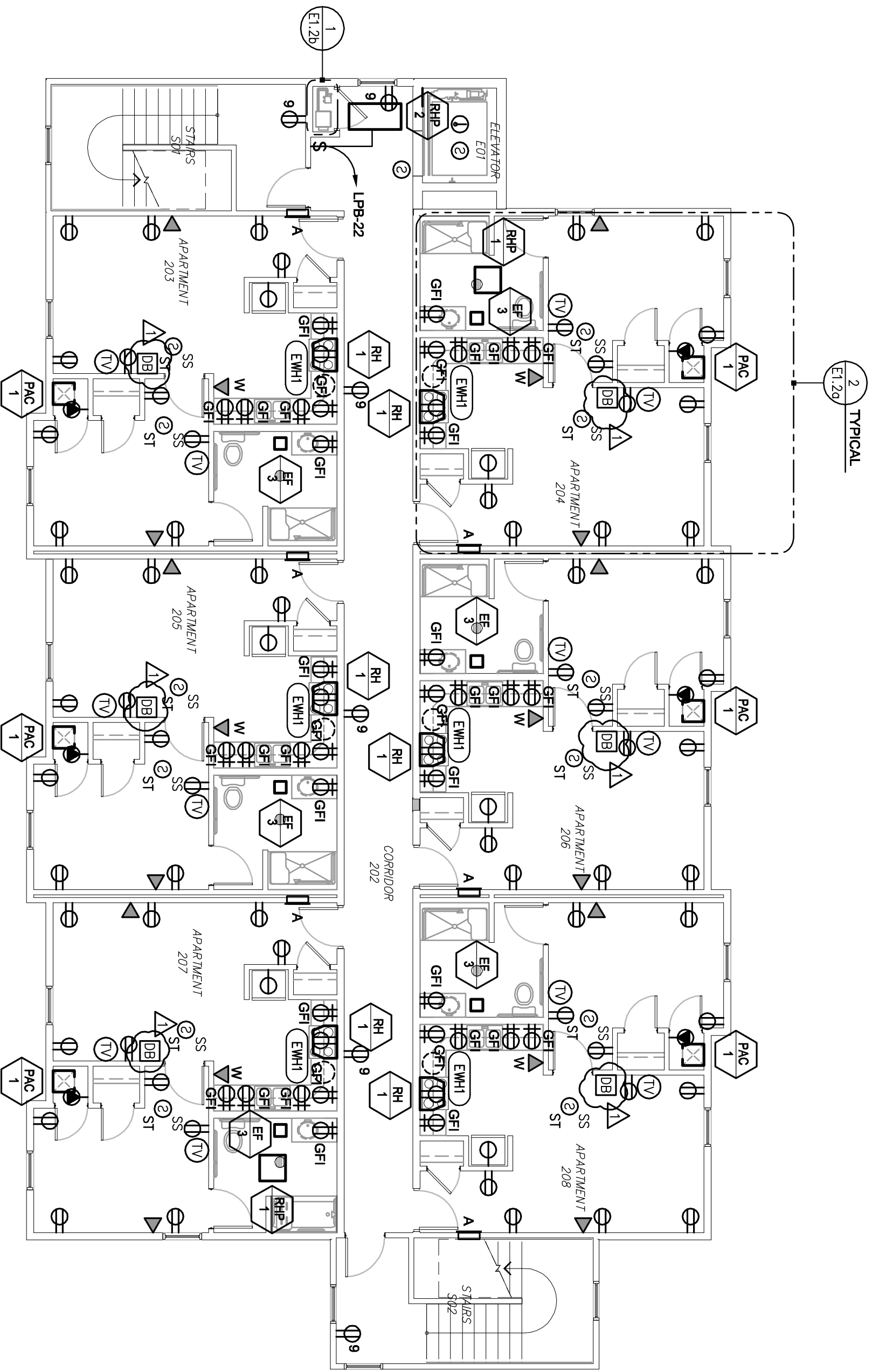


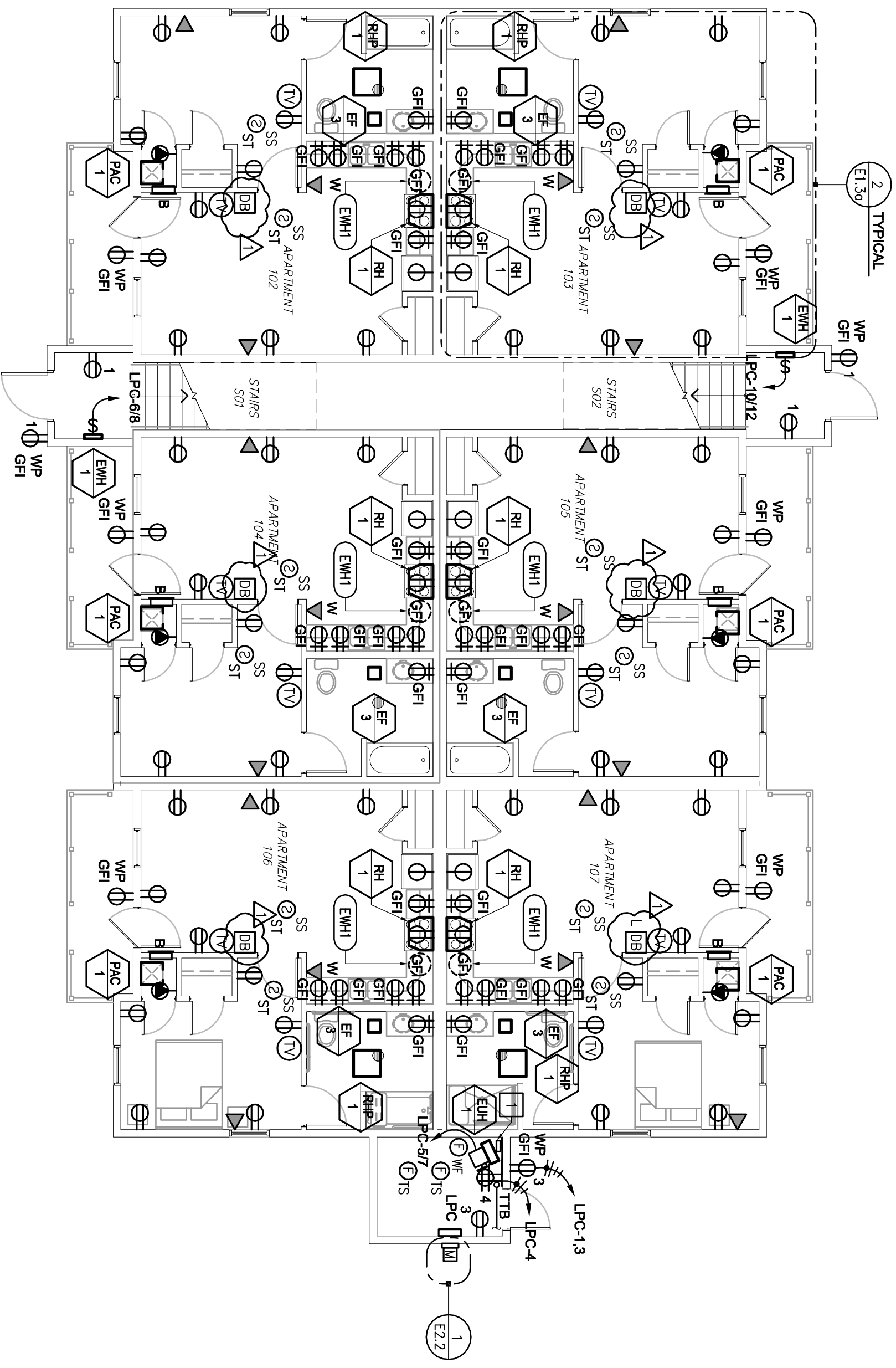
2 TYPICAL  
E1.2a

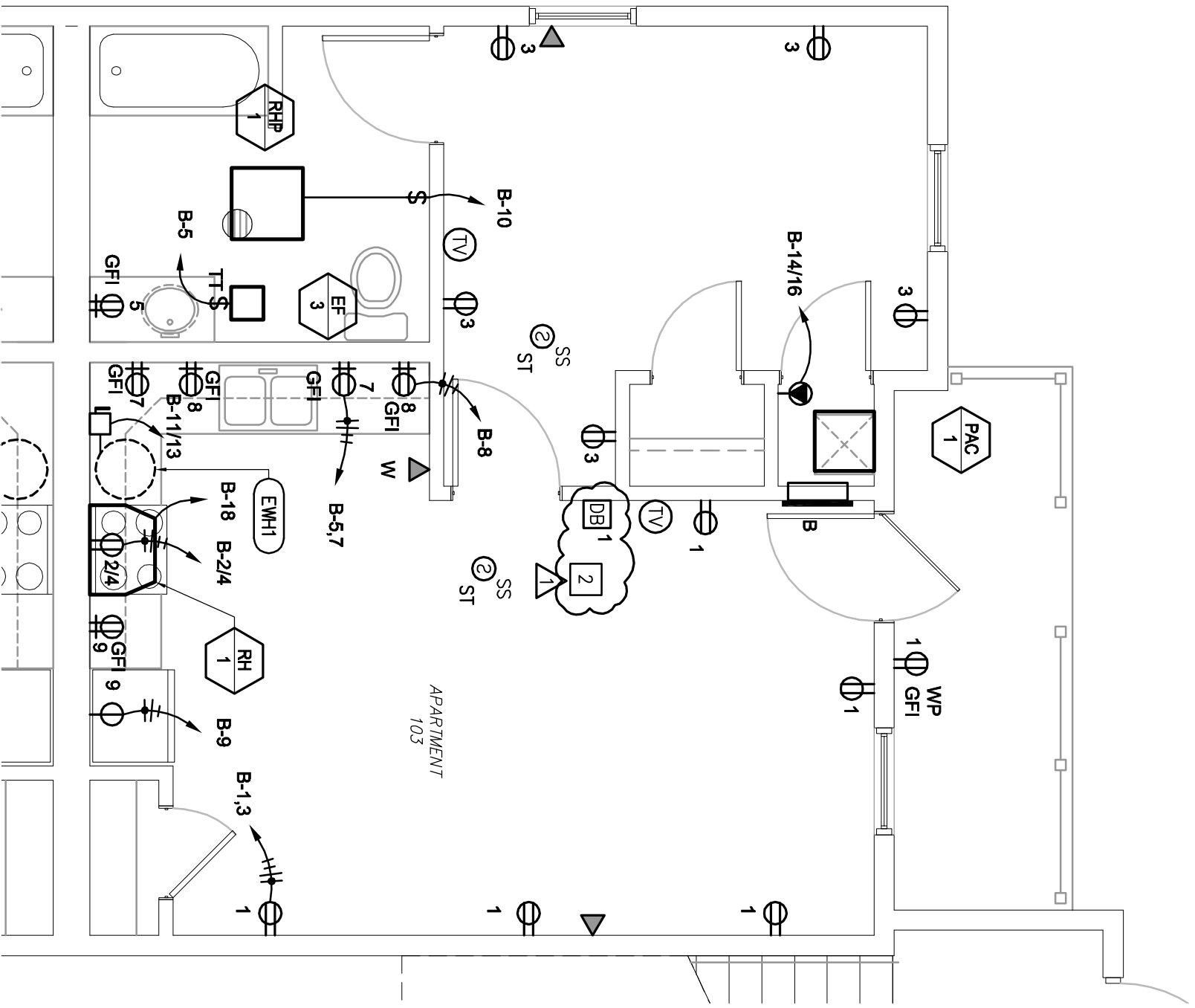


**Keyed Notes:**

2 CONTRACTOR SHALL PROVIDE HEATH ZENITH #LE-47-A OR APPROVED EQUAL AND LE-221-C STYLE PUSHBUTTONS AT MAIN DOOR. CONTRACTOR SHALL PROVIDE VISUAL ANNUNCIATION ADJACENT TO AUDIO BELL AS SHOWN ON PLANS.

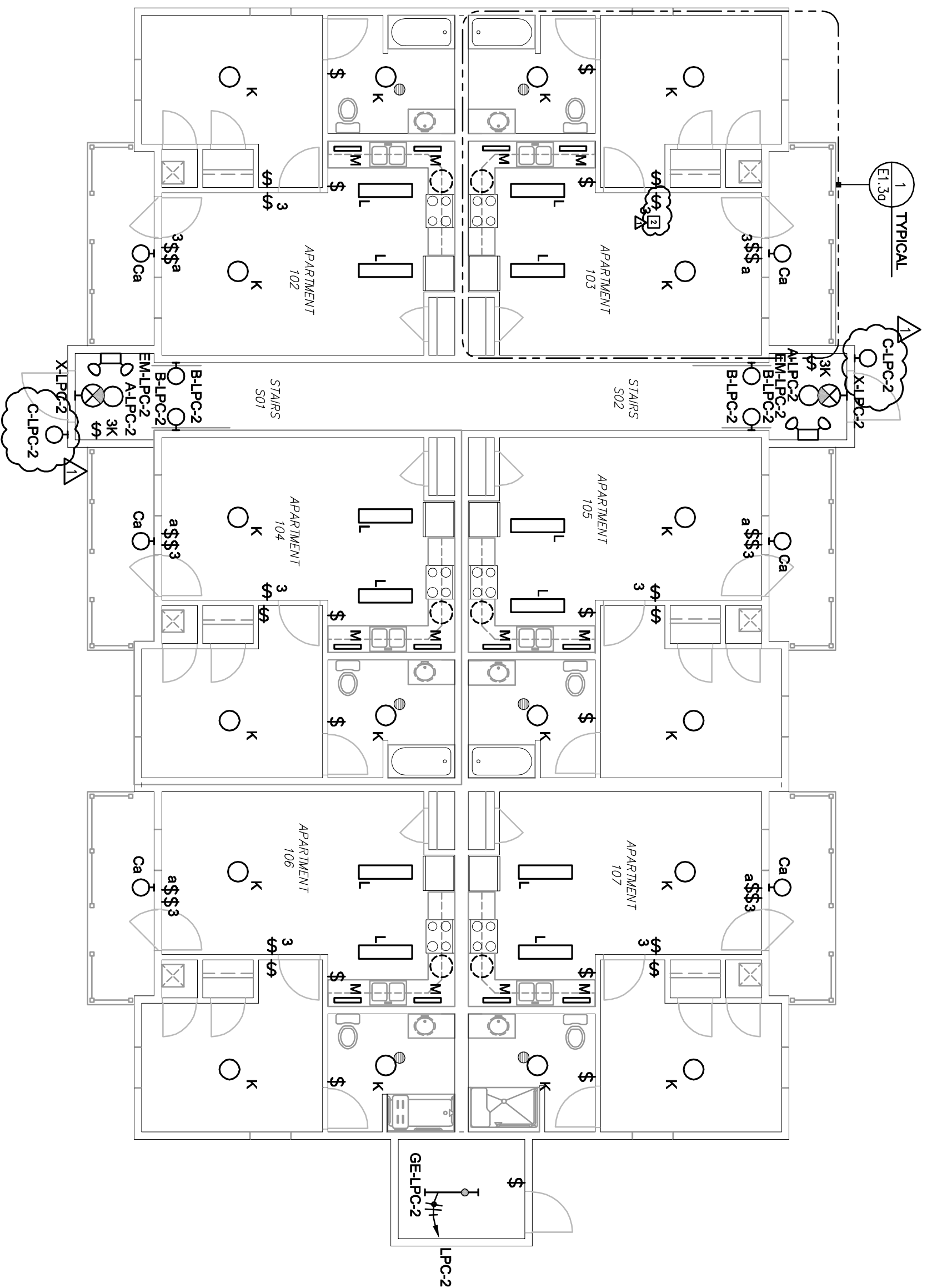




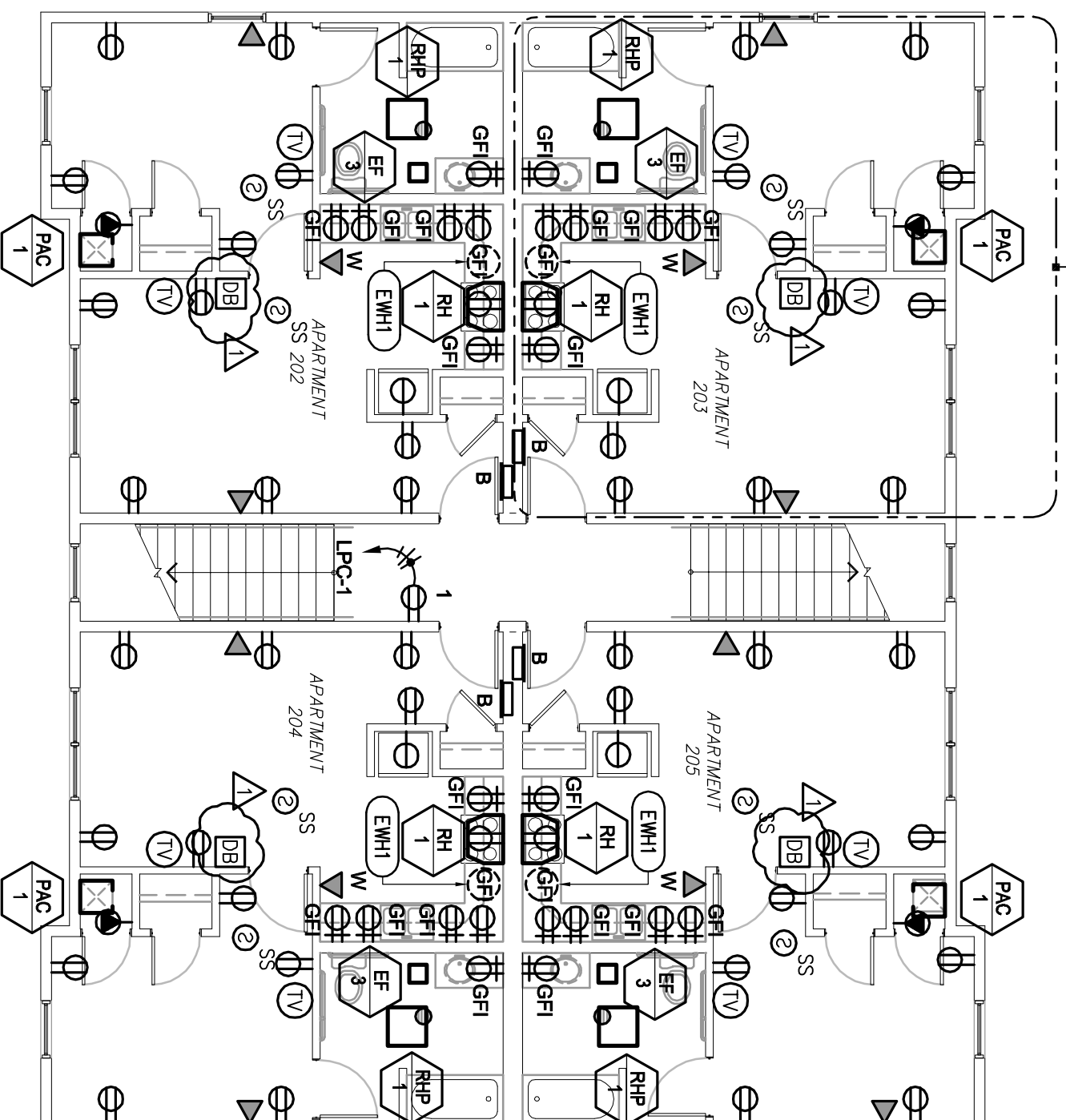


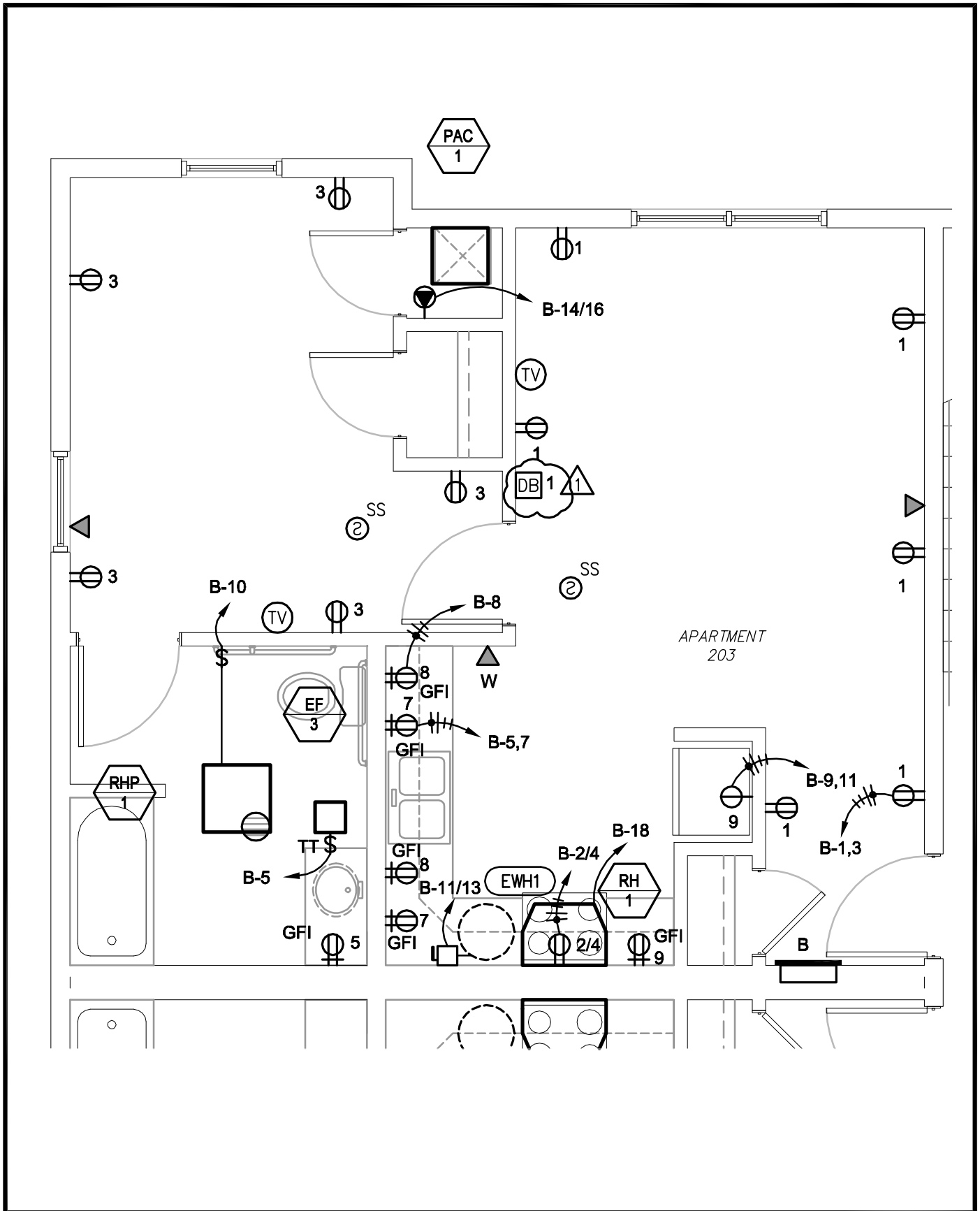
**Keyed Notes:**

2 CONTRACTOR SHALL PROVIDE HEATH ZENITH #LE-47-A OR APPROVED EQUAL AND LE-221-C STYLE PUSHBUTTONS AT MAIN DOOR. CONTRACTOR SHALL PROVIDE VISUAL ANNUNCIATION ADJACENT TO AUDIO BELL AS SHOWN ON PLANS.



2 TYPICAL  
E1.3b





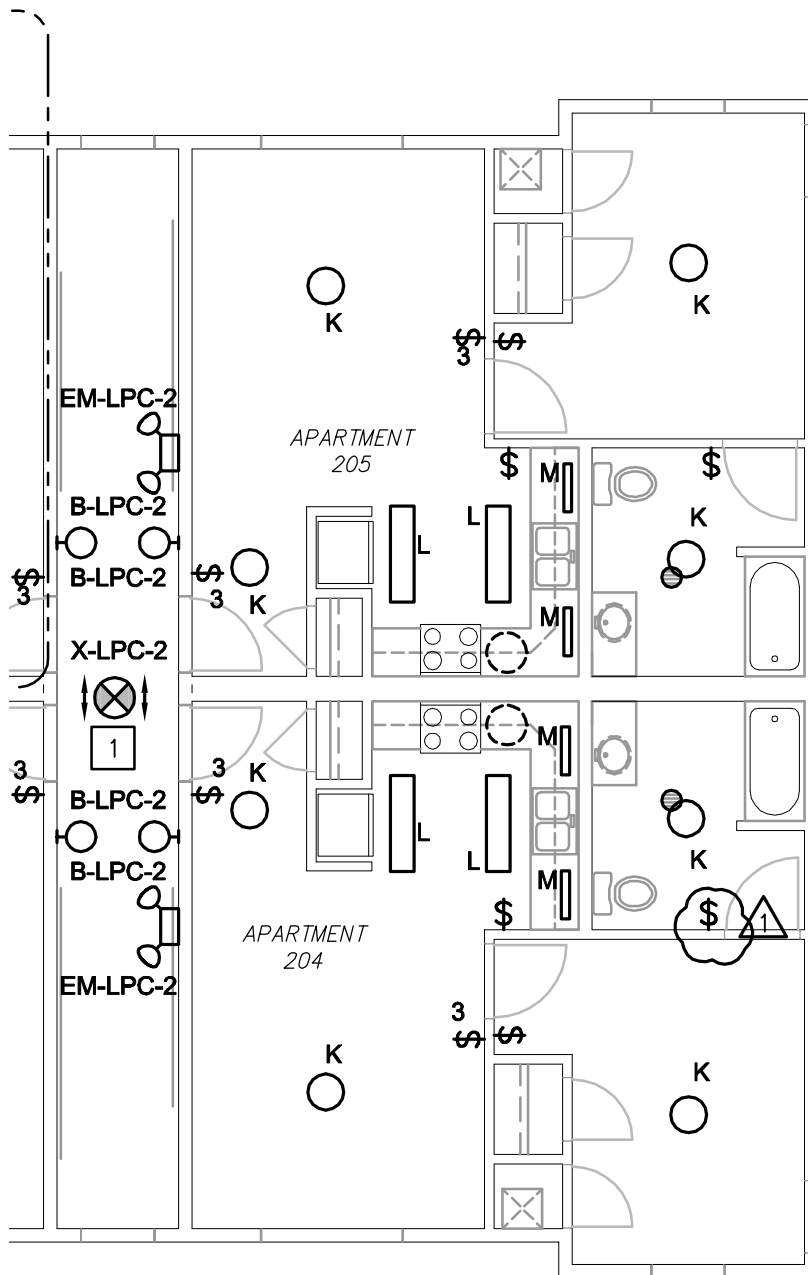
**Farnsworth**  
 GROUP  
 7707 N. KNOXVILLE AVE, SUITE 100  
 PEORIA, ILLINOIS 61614  
 (309) 689-9888 / (309) 689-9820 Fax

Peoria Housing Authority  
 Peoria, IL  
 Harrison Homes Redevelopment

Typical Second Floor Singles Apartment Power Plan

Project No:0090282.00  
 Book No:  
 Drawn by: BMS/BPH  
 Reviewed: RLJ  
 Date: 08/04/09

E1.3b (SD2)



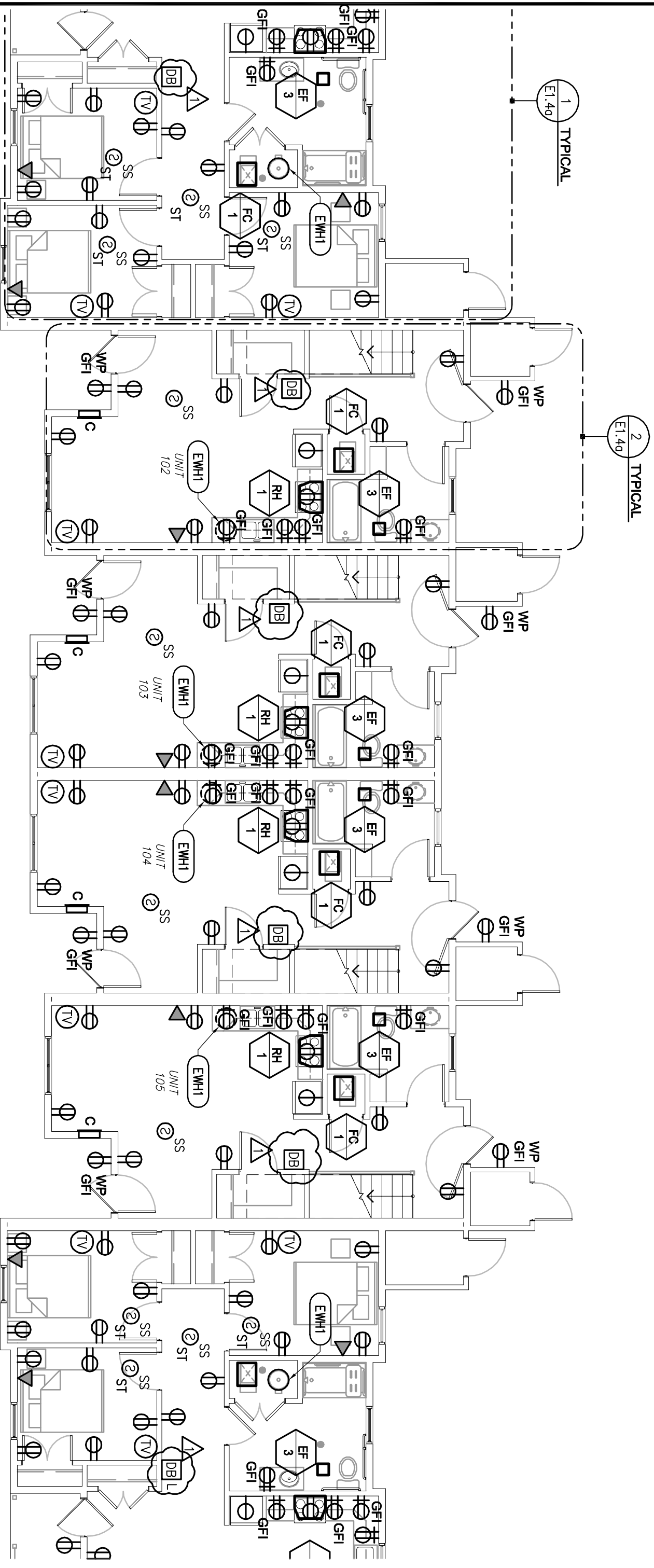
**Farnsworth**  
 GROUP  
 7707 N. KNOXVILLE AVE, SUITE 100  
 PEORIA, ILLINOIS 61614  
 (309) 689-9888 / (309) 689-9820 Fax

Peoria Housing Authority  
 Peoria, IL  
 Harrison Homes Redevelopment

Partial Second Floor Singles Apartment Lighting Plan

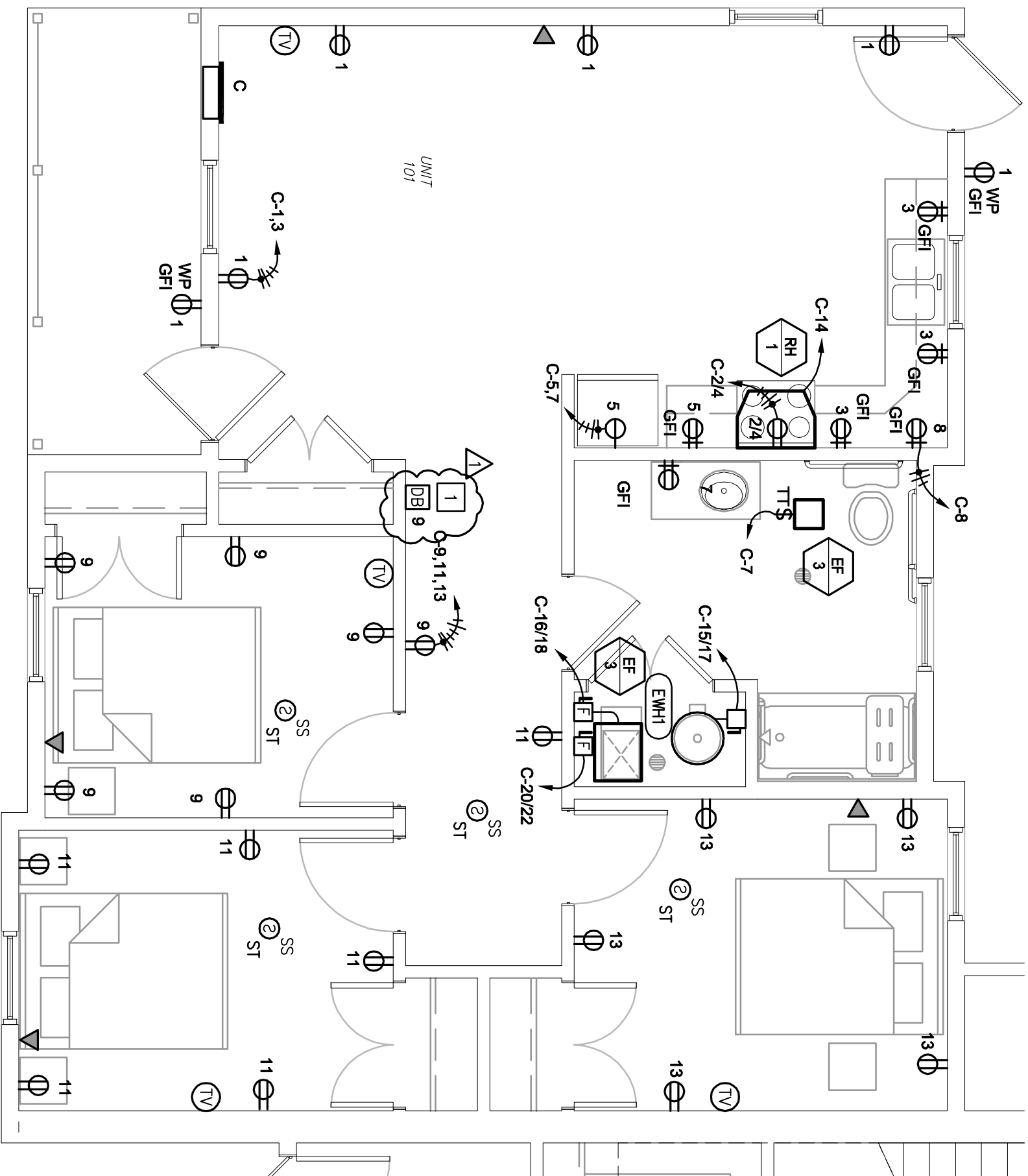
Project No:0090282.00  
 Book No:  
 Drawn by: BMS/BPH  
 Reviewed: RLJ  
 Date: 08/04/09

E1.3b (SD3)



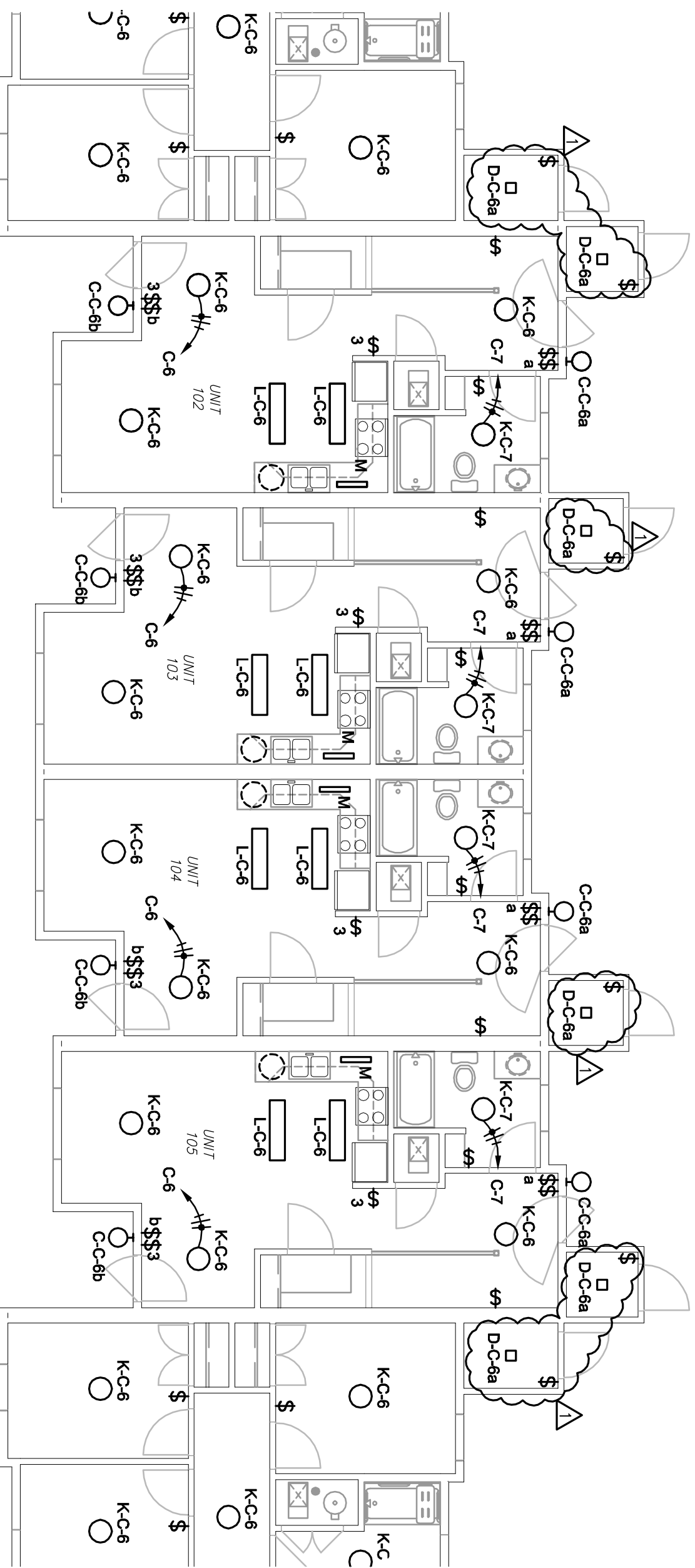
**General Notes:**

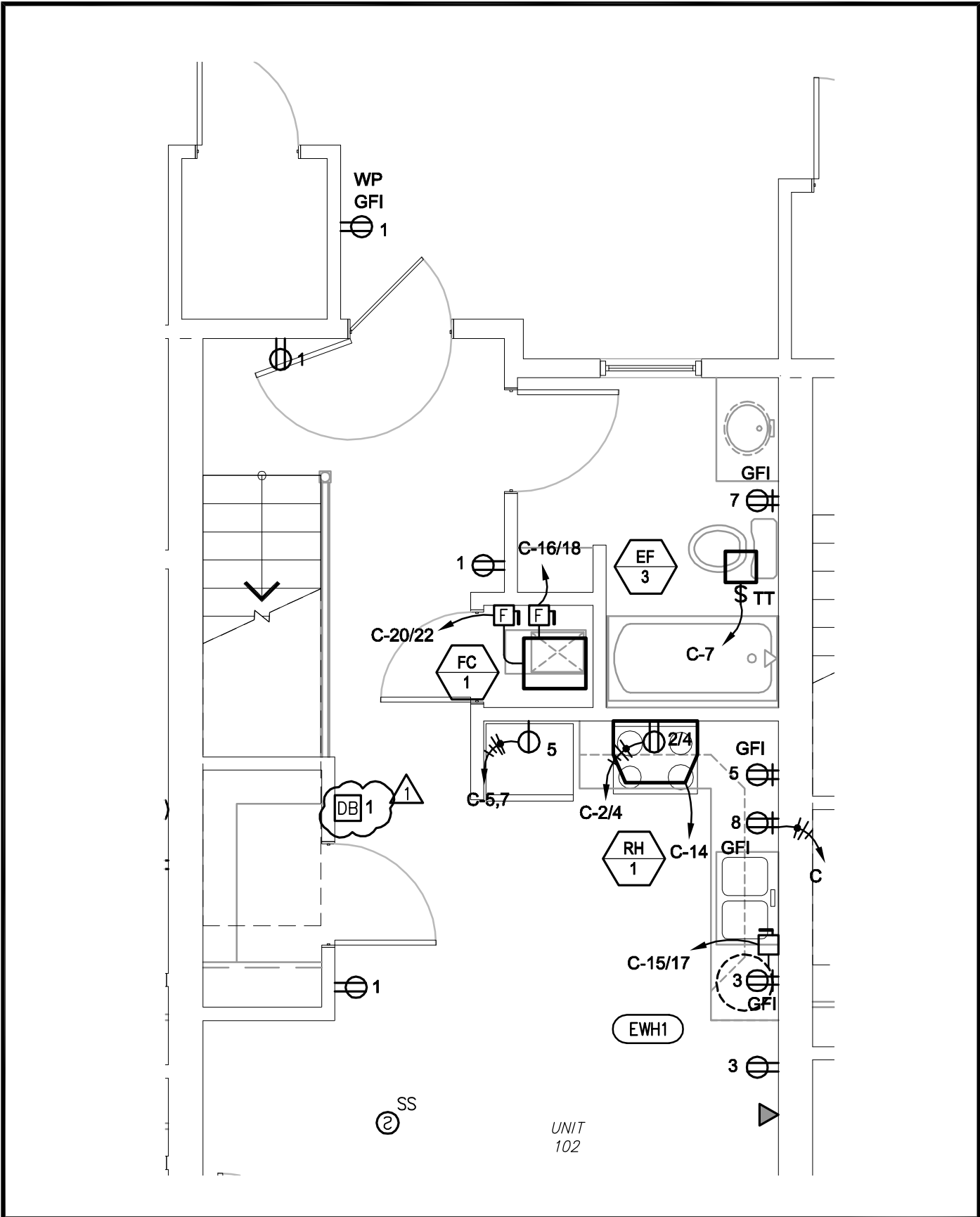
1. SMOKE DETECTORS IN EACH TOWNHOUSE UNIT SHALL ACT SUCH THAT WHEN ONE SMOKE DETECTOR IN THAT UNIT IS ANNUNCIATED, ALL SMOKE DETECTORS WILL ALARM.



**Keyed Notes:**

1 CONTRACTOR SHALL PROVIDE HEATH ZENITH #LE-47-A OR APPROVED EQUAL AND LE-221-C STYLE PUSHBUTTONS AT MAIN AND REAR DOOR. CONTRACTOR SHALL PROVIDE VISUAL ANNUNCIATION ADJACENT TO AUDIO BELL AS SHOWN ON PLANS.







**Farnsworth**  
 GROUP  
 7707 N. KNOXVILLE AVE, SUITE 100  
 PEORIA, ILLINOIS 61614  
 (309) 689-9888 / (309) 689-9820 Fax

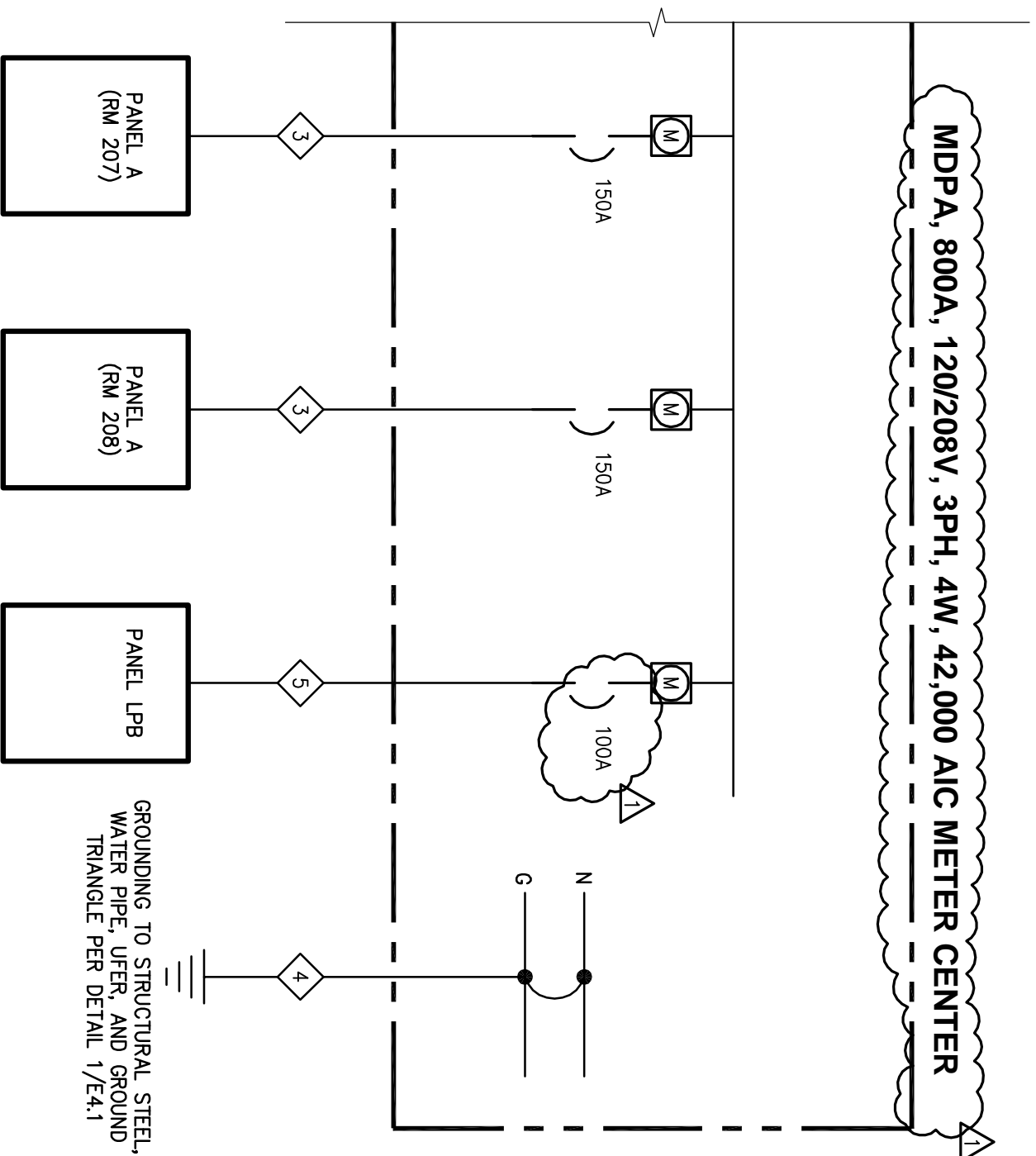
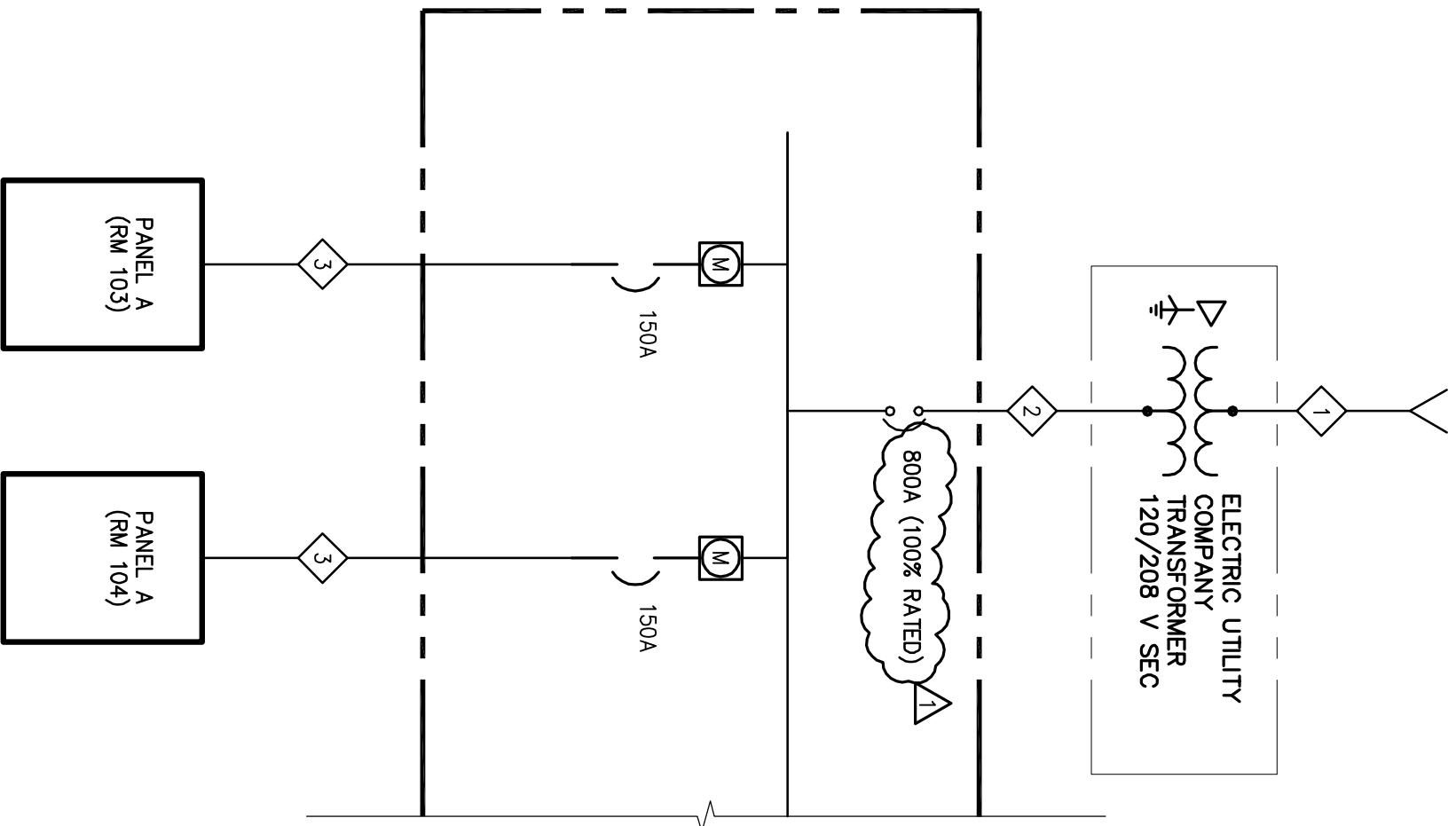
Peoria Housing Authority  
 Peoria, IL  
 Harrison Homes Redevelopment

Partial First Floor Townhome Power Plan (Enlarged)

Project No.0090282.00  
 Book No:  
 Drawn by: BMS/BPH  
 Reviewed: RLJ  
 Date: 08/04/09

E1.4a (SD4)

FEEDER SCHEDULE	
MARK	DESCRIPTION (ALL CONDUCTORS COPPER U.O.N.)
2	2 SETS (4-600 KCML, 3-1/2" C) 
5	4#1, 1#8G, 1-1/2" C 



**Farnsworth**  
GROUP  
7707 N. KNOXVILLE AVE, SUITE 100  
PEORIA, ILLINOIS 61614  
(309) 689-9888 / (309) 689-9820 FAX

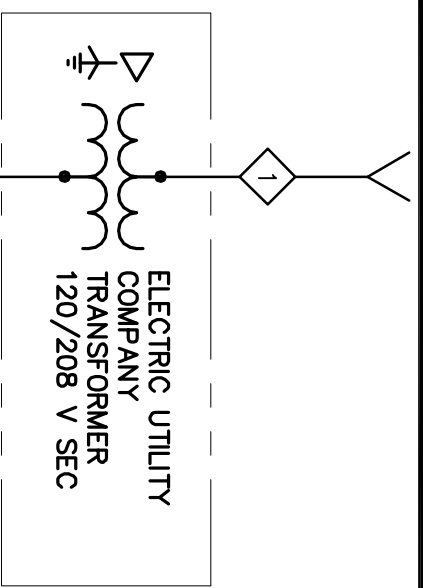
Peoria Housing Authority  
Peoria, IL  
Harrison Homes Redevelopment  
Partial One-Line Diagram

Project No: 0090282.00  
Book No:  
Drawn by: BMS/BPH  
Reviewed: RLJ  
Date: 08/04/09

E2.1 (SD1)

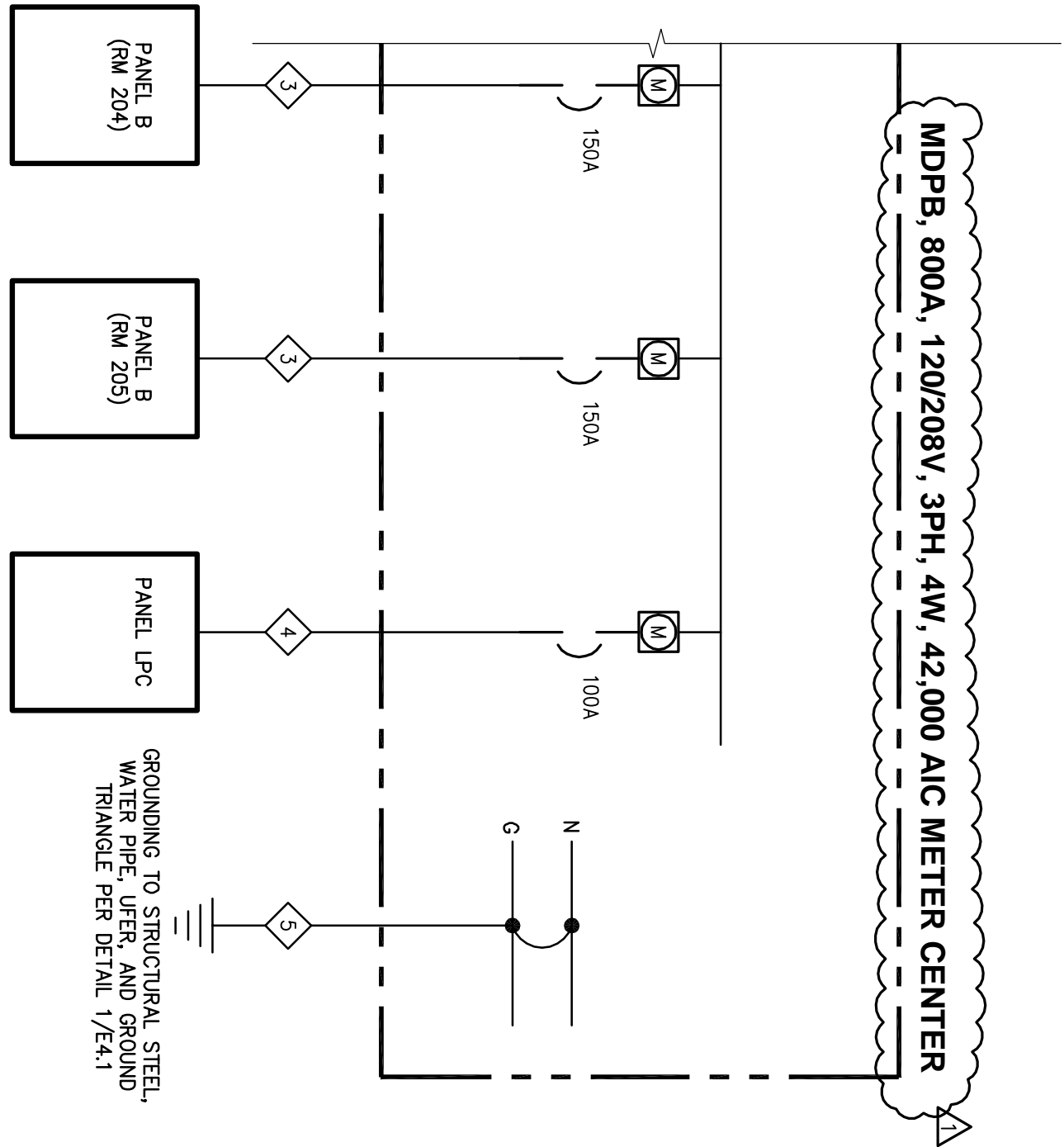
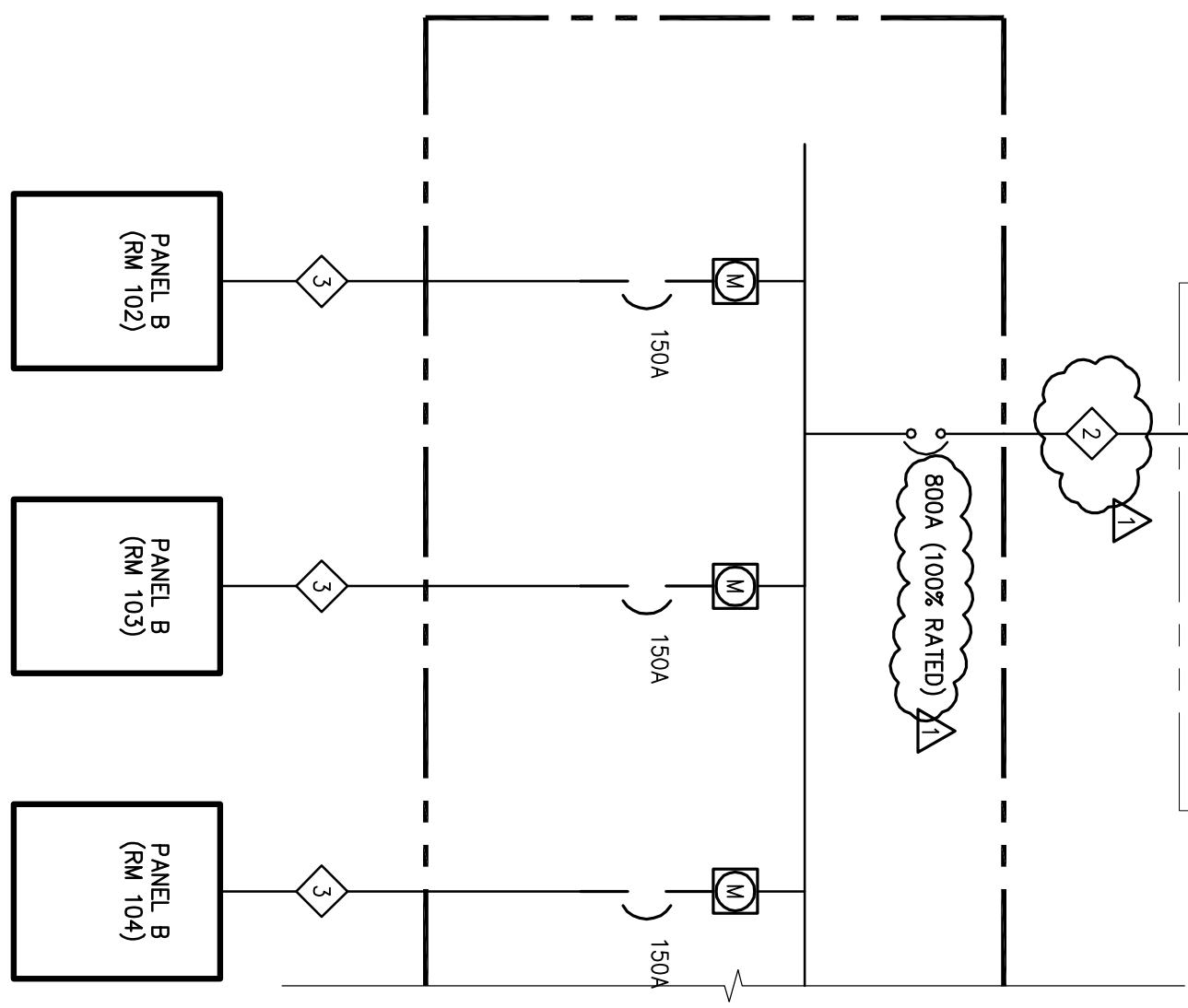
<b>MDPA LOAD CALCULATIONS (SENIOR APARMTENTS)</b>			
Description	Connected Load (VA Each)	Quantity	Total (VA)
Apartment Panels A	21989	12	263868
Common Panel LPB @ 100%	21463	1	21463
Total	Total demand based on 40% of Panel A plus 100% of Panel LPB		285331
Demand Per NEC Table 220.84			40%
Demand Total (VA)			127010
Demand Total (Amps)			353





FEEDER SCHEDULE	
MARK	DESCRIPTION
2	2 SETS (4-600 KCMIL, 3-1/2" C) <small>(ALL CONDUCTORS COPPER U.O.N.)</small>

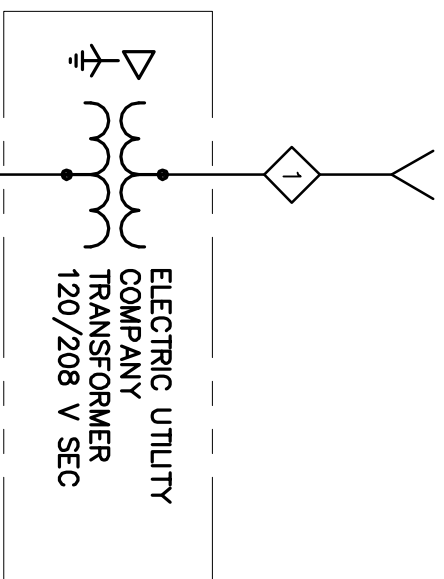
**MDPB, 800A, 120/208V, 3PH, 4W, 42,000 AIC METER CENTER**



**Farnsworth**  
GROUP  
7707 N. KNOXVILLE AVE, SUITE 100  
PEORIA, ILLINOIS 61614  
(309) 689-9888 / (309) 689-9820 FAX

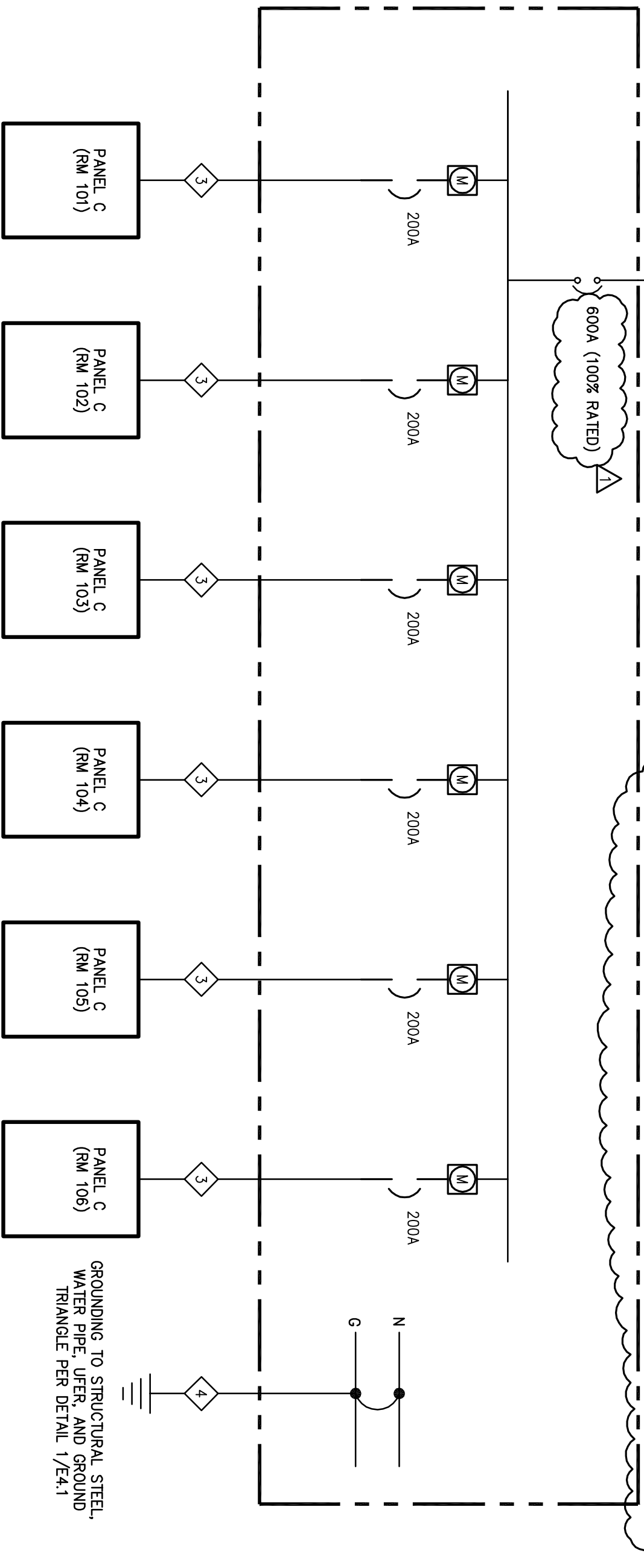
Peoria Housing Authority  
Peoria, IL  
Harrison Homes Redevelopment  
Partial One-Line Diagram

Project No: 0090282.00  
Book No:  
Drawn by: BMS/BPH  
Reviewed: RLJ  
Date: 08/04/09  
E2.2 (SD1)

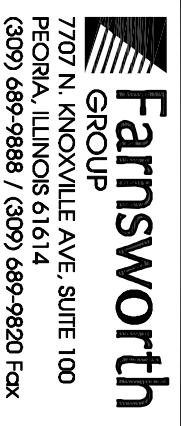


FEEDER SCHEDULE	
MARK	DESCRIPTION (ALL CONDUCTORS COPPER U.O.N.)
2	2 SETS (4-350 KCMIL, 3"Ø)

**MDPC, 600A, 120/208V, 3PH, 4W, 42,000 AIC METER CENTER**



GROUNDING TO STRUCTURAL STEEL,  
WATER PIPE, UFER, AND GROUND  
TRIANGLE PER DETAIL 1/E4.1



Peoria Housing Authority  
Peoria, IL  
Harrison Homes Redevelopment  
Partial One-Line Diagram

Project No: 0090282.00  
Book No:  
Drawn by: BMS/BPH  
Reviewed: RLJ  
Date: 08/04/09  
E2.2 (SD2)

<b>MDPB LOAD CALCULATIONS (SINGLES APARMTENTS)</b>			
Description	Connected Load (VA Each)	Quantity	Total (VA)
Apartment Panels A	21839	10	218390
Common Panel LPC @ 100%	12518	1	12518
Total	Total demand based on 43% of Panel A plus 100% of Panel LPB		230908
Demand Per NEC Table 220.84			43%
Demand Total (VA)			106426
Demand Total (Amps)			295



<b>MDPC LOAD CALCULATIONS (TOWNHOUSES)</b>			
Description	Connected Load (VA Each)	Quantity	Total (VA)
Apartment Panels A	31154	6	186924
Total			186924
Demand Per NEC Table 220.84			44%
Demand Total (VA)			82247
Demand Total (Amps)			228




**Farnsworth**  
 GROUP  
 7707 N. KNOXVILLE AVE, SUITE 100  
 PEORIA, ILLINOIS 61614  
 (309) 689-9888 / (309) 689-9820 Fax

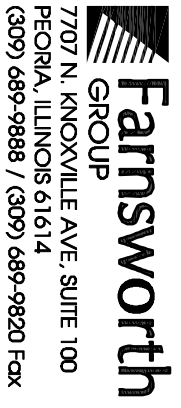
Peoria Housing Authority  
 Peoria, IL  
 Harrison Homes Redevelopment  
 Partial One-Line Diagram

Project No:0090282.00  
 Book No:  
 Drawn by: BMS/BPH  
 Reviewed: RLJ  
 Date: 08/04/09

E2.2 (SD3)

## LUMINAIRE SCHEDULE

TYPE	LUMINAIRE				LAMP DATA				REMARKS	TYPE	
	MANUFACTURER / CATALOG NO.	DESCRIPTION	VOLT AMPS	VOLTS	LAMP CODE	QNTY	WATTS				
A	SEA GULL LIGHTING 79264BLE-962	CEILING MOUNTED LUMINAIRE	24	120	22W G10Q CIRCLINE	1	22			K	SEA GU 79058B
	ENGINEER APPROVED EQUAL										ENGINE
B	SEA GULL LIGHTING 49036BLE-999	WALL SCONCE	16	120	CF13TT/SP835	1	13			L	LITHON 10813B
	ENGINEER APPROVED EQUAL										THOMA COOPE
C	SEA GULL LIGHTING 8592-965	BUILDING MOUNTED LUMINAIRE	60	120	60W INCANDESCENT	1	60			M	UTILITE GU9113
	ENGINEER APPROVED EQUAL										ENGINE
D	SEA GULL LIGHTING 75467-965	CEILING MOUNTED EXTERIOR LUMINAIRE	60	120	60W INCANDESCENT	1	60			P	RAL CVP26F
	ENGINEER APPROVED EQUAL										ENGINE
EM	LITHONIA ELM2	EMERGENCY WALL MOUNTED LUMINAIRE	-	120	INCLUDED	-	-			QE	LITHON AF 2/26
	THOMAS LIGHTING COOPER LIGHTING										THOMA COOPE
F	LITHONIA 2GT8 2 32 A12125 MVOLT GEB10IS	2X4' RECESSED FLUORESCENT TROFFER	58	120	F32T8/SP835	2	32			R	LITHON L 2 17 1



Peoria Housing Authority  
Peoria, IL  
Harrison Homes Redevelopment  
Partial Luminaire Schedule

Project No: 0090282.00  
Book No:  
Drawn by: BMS/BPH  
Reviewed: RLJ  
Date: 08/04/09

E3.1 (SD1)

# PANELBOARD A

PANEL WIDTH:	20"	TYPE:	NGOOD VOLTS:	120/208	PHASE:	1	MAIN BREAKER:	1
AIC:	10,000	MOUNTING:	NGOOD MAIN RATING:	150	WIRE:	3	GROUND BAR:	3
		FEED:	BRANCH BREAKERS:	2			NEUTRAL BAR:	100%

LOAD DESCRIPTION	AMP RATING	POLE	BREAKER ACCESS.	LOAD TYPE	CIRCUIT NUMBER	LEFT PHASE LOAD		RIGHT PHASE LOAD		CIRCUIT NUMBER	LOAD TYPE	BREAKER ACCESS.	POLE	AMP RATING	LOAD DESCRIPTION
						A	B	A	B						
RECEPTACLES	20	1	A	R	1	1200		3540		2	R		2	50	STOVE
RECEPTACLES	20	1	A	R	3		1200		3540	4	R		2	50	STOVE
RCPT/LTG BATHROOM/EF-3	20	1	A	R	5	340		350		6	L	A	1	20	LIGHTING
RECEPTACLES	20	1	A	R	7		1500		400	8	L	A	1	20	UNDER CABINET LIGHTING
RECEPTACLES	20	1	A	R	9	1500		2250		10	E		2	30	ELECTRIC WATER HEATER (EWH1)
SPARE	20	1	A	R	11		-		2250	12	E		2	30	ELECTRIC WATER HEATER (EWH1)
RADIANT HEATER (RHP-1)	20	1	A	E	13	375		-		14	E		1	20	SPARE
RANGE HOOD (RH-1)	20	1	A	E	15		216		-	16	E		1	20	SPARE
PACKAGED AIR CONDITIONER (PAC-1)	20	2	A	E	17	1664		-		18	E		1	20	SPARE
SPARE	20	1	A	E	19		1664		-	20	E		1	20	SPARE
SPARE	20	1	A	E	21		-		-	22	E		1	20	SPARE
SPARE	20	1	A	E	23		-		-	24	E		1	20	SPARE
SUB-TOTAL						5079	4580	6140	6190						
TOTAL						11219	10770	6140	6190						

**NOTES:**

TOTAL CONNECTED LOAD: 22.0 KVA  
 LIGHTING LOAD: 0.8 KVA x 100 % = 10.0 KVA  
 RECEPTACLE LOAD: 2.8 KVA x 50 % = 1.4 KVA  
 EQUIPMENT/PANEL LOAD: 8.4 KVA x 100 % = 8.4 KVA  
 TOTAL DEMAND LOAD: 20.6 KVA  
 TOTAL DEMAND CURRENT: 99 A

Project No: 0090282.00  
 Book No:  
 Drawn by: BMS/BPH  
 Reviewed: RLJ  
 Date: 08/04/09

Peoria Housing Authority  
 Peoria, IL  
 Harrison Homes Redevelopment  
 Panelboard A





# PANELBOARD C

<b>PANEL WIDTH:</b>	20"	<b>TYPE:</b>	GO LOAD CENTER	<b>VOLTS:</b>	120/208	<b>PHASE:</b>	1	<b>MAIN BREAKER:</b>	100%
<b>AIC:</b>	10,000	<b>MOUNTING:</b>	SURFACE	<b>MAIN RATING:</b>	200	<b>WIRE:</b>	3	<b>GROUND BAR:</b>	100%
		<b>FEED:</b>	MLO @ BOTTOM	<b>POLES:</b>	2			<b>NEUTRAL BAR:</b>	100%

### BRANCH BREAKERS

LOAD DESCRIPTION	AMP RATING	POLE	BREAKER ACCESS.	LOAD TYPE	CIRCUIT NUMBER	LEFT PHASE LOAD		RIGHT PHASE LOAD		CIRCUIT NUMBER	LOAD TYPE	BREAKER ACCESS.	POLE	AMP RATING	LOAD DESCRIPTION
						A	B	A	B						
RECEPTACLES	20	1	A	R	1	1250		3540		2	R		2	50	STOVE
RECEPTACLES	20	1	A	R	3		1500		3540	4	R		2	50	
RECEPTACLES	20	1	A	R	5	1500		1002		6	L	A	1	20	LIGHTING
RCPT/LTG BATHROOMS	20	1	A	R	7		340		200	8	L	A	1	20	UNDER CABINET LIGHTING
RECEPTACLES	20	1	A	R	9	1250		1439		10	E		2	30	CONDENSING UNIT (CU-2)
RECEPTACLES	20	1	A	R	11		1200		1439	12	E		2	30	RANGE HOOD (RH-1)
RCPT (ACCESSIBLE ONLY)	20	1	A	R	13	1000		216		14	E	A	1	20	FAN COIL (FC-1) ELECTRIC HEAT
ELECTRIC WATER HEATER (EWH1)	30	2		E	15		2250		3328	16	E		2	50	FAN COIL (FC-1) ELECTRIC HEAT
SPARE	20	1			17	2250		3328		18	E		2	50	FAN COIL (FC-1) ELECTRIC HEAT
SPARE	20	1			19		-		291	20	E		2	20	FAN COIL (FC-1) FAN
SPARE	20	1			21		-		291	22	E		2	20	FAN COIL (FC-1) FAN
SPARE	20	1			23		-		-	24			1	20	SPARE
<b>SUB-TOTAL</b>						<b>7250</b>	<b>5290</b>	<b>9816</b>	<b>8798</b>						
<b>TOTAL</b>						<b>17066</b>	<b>14088</b>								

**NOTES:**

TOTAL CONNECTED LOAD: 31.2 kVA

LIGHTING LOAD: 1.2 kVA x 100 % = 1.2 kVA

RECEPTACLE LOAD: 10.0 kVA x 100 % = 10.0 kVA

EQUIPMENT/PANEL LOAD: 5.1 kVA x 50 % = 2.6 kVA

TOTAL DEMAND LOAD: 14.8 kVA x 100 % = 14.8 kVA

TOTAL DEMAND CURRENT: 28.6 kVA / 137 A

Project No: 0090282.00  
 Book No:  
 Drawn by: BMS/BPH  
 Reviewed: RLJ  
 Date: 08/04/09

Peoria Housing Authority  
 Peoria, IL  
 Harrison Homes Redevelopment  
 Panelboard C





## PANELBOARD LPB

PANEL WIDTH: 20" TYPE: 20" MOUNTING: 10,000 SURFACE MAIN RATING: 120/208 PHASE: 3 MAIN BREAKER: 400%  
 AIC: 10,000 FEED: MLO @ BOTTOM POLES: BRANCH BREAKERS 150 WIRE: 4 GROUND BAR: NEUTRAL BAR: 100%  
 NOOD VOLTS: 120/208

LOAD DESCRIPTION	AMP RATING	POLE	BREAKER ACCESS.	LOAD TYPE	CIRCUIT NUMBER	LEFT PHASE LOAD			RIGHT PHASE LOAD			CIRCUIT NUMBER	LOAD TYPE	BREAKER ACCESS.	POLE	AMP RATING	LOAD DESCRIPTION
						A	B	C	A	B	C						
RCPT FIRST FLOOR	20	1	A	R	1	1000			970			2	L	A	1	20	CORRIDOR LIGHTING
RCPT FIRST FLOOR	20	1	A	R	3	1000			45			4	L	A	1	20	ELEVATOR PIT LIGHTING
RCPT ELEVATOR PIT	20	1	R	R	5			200				6	E	A	1	20	FIRE ALARM CONTROL PANEL
SUMP PUMP	20	1	E	E	7	864			1248			8	E	A	1	20	ELECTRIC UNIT HEATER (EUH-1)
RCPT SECOND FLOOR	20	1	A	R	9	1200			1248			10	E	A	2	30	ELECTRIC HEATER (EBB-1)
RADIANT HEATER (RHP-2)	20	1	E	E	11			750				12	E	A	2	20	ELECTRIC HEATER (EBB-1)
RADIANT HEATER (RHP-2)	20	1	E	E	13	750			499			14	E	A	2	20	ELECTRIC HEATER (EBB-1)
RADIANT HEATER (RHP-1)	20	1	E	E	15			375				16	E	A	1	20	RADIANT HEATER (RHP-2)
RADIANT HEATER (RHP-1)	20	1	E	E	17			375				18	E	A	1	20	RADIANT HEATER (RHP-2)
TELEPHONE TERMINAL BRD	20	1	R	R	19	400			750			20	E	A	1	20	RADIANT HEATER (RHP-2)
RCPT/LTG ELEV. CNTRL. RM	20	1	R	R	21	239			750			22	E	A	1	20	RADIANT HEATER (RHP-2)
SPARE	20	1			23			-	1667			24	E	A	1	20	ELEVATOR CAB POWER/LTG
SPARE	20	1			25			-	1667			26	E	A	1	20	ELEVATOR
SPARE	20	1			27			-	1667			28	E	S	3	30	ELEVATOR
SPARE	20	1			29			-	1667			30	E	S	3	30	ELEVATOR
SPARE	20	1			31			-	1667			32	E	S	3	30	ELEVATOR
SPARE	20	1			33			-	1667			34	E	S	3	30	ELEVATOR
SPARE	20	1			35			-	1667			36	E	S	3	30	ELEVATOR
SPARE	20	1			37			-	1667			38	E	S	3	30	ELEVATOR
SPARE	20	1			39			-	1667			40	E	S	3	30	ELEVATOR
SPARE	20	1			41			-	1667			42	E	S	3	30	ELEVATOR
SUB-TOTAL						3014	2814	1325	5134	4460	4716						
TOTAL						8148	7274	8041									

**NOTES:**

TOTAL CONNECTED LOAD: 21.5 kVA  
 LIGHTING LOAD: 1.0 kVA x 100 % = 1.0 kVA  
 RECEPTACLE LOAD: 4.0 kVA x 100 % = 4.0 kVA  
 EQUIPMENT LOAD: 0.0 kVA x 50 % = 0.0 kVA  
 TOTAL DEMAND LOAD: 16.4 kVA x 100 % = 16.4 kVA  
 TOTAL DEMAND CURRENT: 21.5 kVA / 80 A = 269 A

Project No: 0090282.00  
 Book No:  
 Drawn by: BMS/BPH  
 Reviewed: RLJ  
 Date: 08/04/09

Peoria Housing Authority  
 Peoria, IL  
 Harrison Homes Redevelopment  
 Panelboard LPB

7707 N. KNOXVILLE AVE, SUITE 100  
 PEORIA, ILLINOIS 61614  
 (309) 689-9888 / (309) 689-9820 Fax

ADDENDUM #3

## PANELBOARD LPC

<b>PANEL WIDTH:</b>	20"	<b>TYPE:</b>	GO LOAD CENTER	<b>VOLTS:</b>	120/208	<b>PHASE:</b>	1	<b>MAIN BREAKER:</b>	-
<b>AIC:</b>	10,000	<b>MOUNTING:</b>	100 SURFACE	<b>MAIN RATING:</b>	100	<b>WIRE:</b>	3	<b>GROUND BAR:</b>	100%
		<b>FEED:</b>	ML0 @ BOTTOM	<b>POLES:</b>	2			<b>NEUTRAL BAR:</b>	100%

### BRANCH BREAKERS

LOAD DESCRIPTION	AMP RATING	POLE	BREAKER ACCESS.	LOAD TYPE	CIRCUIT NUMBER	LEFT PHASE LOAD		RIGHT PHASE LOAD		CIRCUIT NUMBER	LOAD TYPE	BREAKER ACCESS.	POLE	AMP RATING	LOAD DESCRIPTION
						A	B	A	B						
RCPT FIRST & SECOND FLR	20	1	A	R	1	1000		354		2	L	A	1	20	LIGHTING
RCPT FIRST FLOOR	20	1	A	R	3		400		400	4	R		1	20	TELEPHONE TERMINAL BOARD
ELECTRIC HEATER (EUH-1)	30	2	A	E	5	1248		1967		6	E		1	30	ELECTRIC HEATER (EWH-1)
SPARE	20	1			7			1967		8			1	30	ELECTRIC HEATER (EWH-1)
SPARE	20	1			9	-		1967		10	E		1	30	ELECTRIC HEATER (EWH-1)
SPARE	20	1			11	-				12			1	20	SPARE
SPARE	20	1			13	-				14			1	20	SPARE
SPARE	20	1			15	-				16			1	20	SPARE
<b>SUB-TOTAL</b>						<b>2248</b>	<b>1648</b>	<b>4288</b>	<b>4334</b>						
<b>TOTAL</b>						<b>6536</b>	<b>5982</b>								

**TOTAL CONNECTED LOAD:** 12.5 kVA  
**LIGHTING LOAD:** 0.4 kVA x 100 % = 0.4 kVA  
**RECEPTACLE LOAD:** 1.8 kVA x 100 % = 1.8 kVA  
**EQUIPMENT/PANEL LOAD:** 0.0 kVA x 50 % = 0.0 kVA  
**TOTAL DEMAND LOAD:** 10.4 kVA x 100 % = 10.4 kVA  
**TOTAL DEMAND CURRENT:** 12.5 kVA / 60 A = 208 A

**NOTES:**

Project No: 0090282.00  
 Book No:  
 Drawn by: BMS/BPH  
 Reviewed: RLJ  
 Date: 08/04/09

Peoria Housing Authority  
 Peoria, IL  
 Harrison Homes Redevelopment  
 Panelboard LPC

