

A close-up, artistic photograph of an Aurora window blind. The blind is partially open, showing the dark grey or black slats. The slats are curved and have a yellow or gold-colored inner lining. The metal frame is visible at the bottom, showing the slat mechanism. The background is white with a blue horizontal bar at the top right.

AURORA™

**SAFCO®**  
CREATING YOUR COMFORT ZONE

# AURORA™ SERIES

Simple lines and extended curves create a functional yet attractive extended seating option. The ability to stack up to 30 high makes them a natural addition to multi-purpose environments such as auditoriums and meeting rooms. Chairs are constructed of solid Chrome plated steel rod frame with polypropylene seat and back. Nylon feet are included for hard surfaces. Optional ganging connector available. Chairs packed 2 per carton.



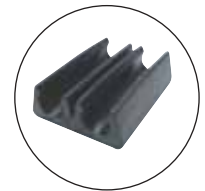
Model 7305RD



Chairs are ideal for overflow auditorium type seating



Stack chairs 30 high on optional dolly



Optional Ganging Connector

Description	Model	Seat W x D x H	Back W x D	Overall W x D x H
Aurora Stack Chair	7305*	16½ x 17 x 17"	17½ x 13½"	25½ x 25½ x 32"
Chair Ganging Connector	6649	—	—	—
Chair Dolly	6686	—	—	27¾ x 21½ x 19¾"

## Seats and Backs are available in 7 Colors:

\* Add color code to model number when ordering.



**SAFCO**