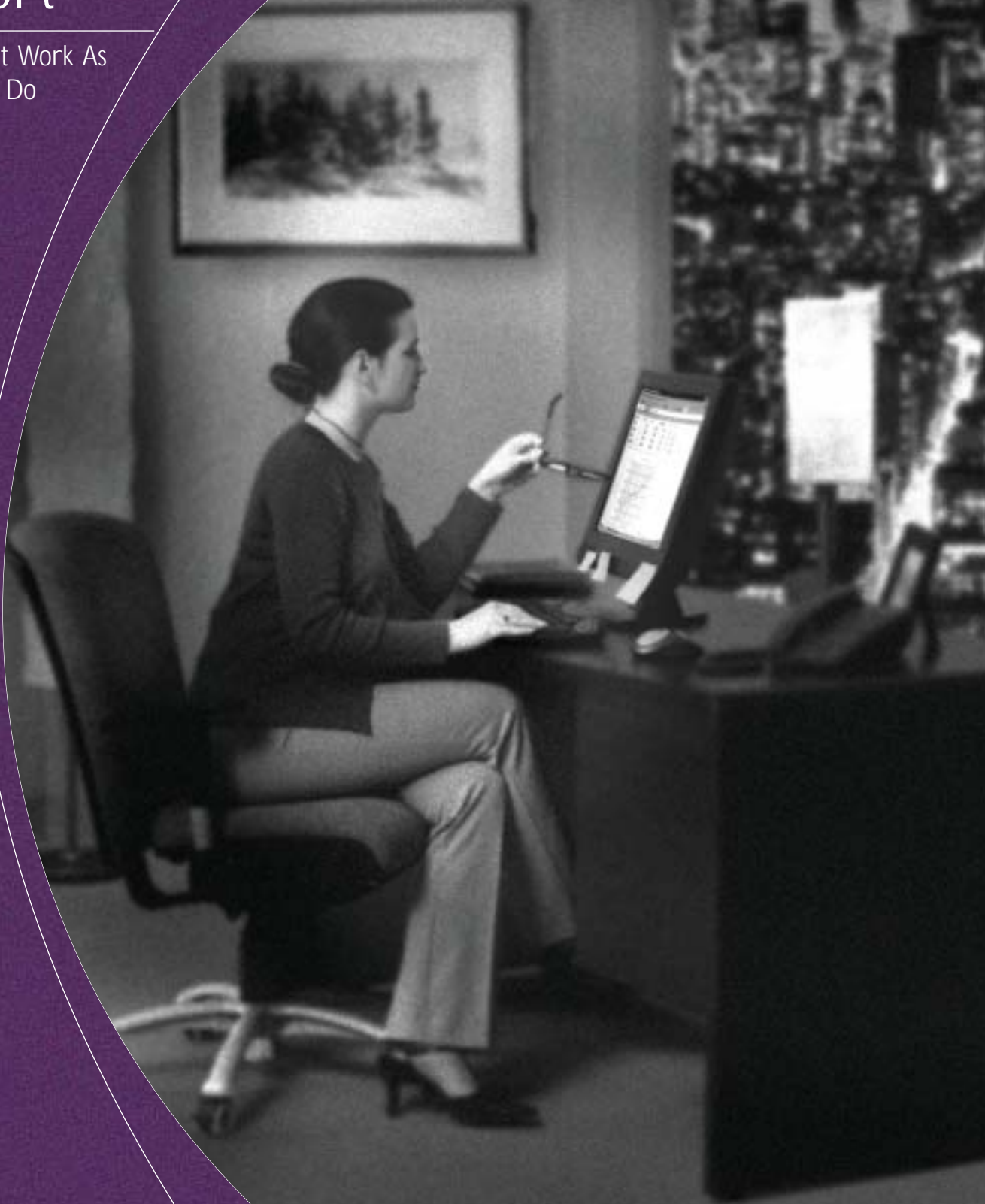


Personal Comfort

Products That Work As
Hard As You Do



SAFCO

Creating Your Comfort Zone

Products That Work As Hard As You Do

Dear Safco Customer:

What do people want most in their working environment?

At Safco, we believe that comfort is the main ingredient to providing a satisfying and productive work experience. Comfort can mean different things to different people. It can mean the individualized comfort that comes from a well-designed, finely crafted chair. It can be the satisfaction you feel from having the perfect storage unit to help you stay organized. Or it can simply be the sense of well being you get from using the correct ergonomic wrist support system designed to keep you comfortable and safe all day...every day.

Safco was founded over 35 years ago with a small offering of corrugated storage products designed for use in offices. Every year since then, we have added high quality, innovative products to our line and backed them with the best service in the industry. Today, we are proud to offer over 2000 premier products that have been designed to meet specific needs in all areas of the workplace.

In the office and at home, people are spending more and more time using computers. With these increased hours comes the need for better ergonomic support products. Our Personal Comfort catalog brings together all the products you need to create a comfortable, ergonomically correct work area. We offer a wide variety of keyboard trays and drawers, wrist supports, monitor risers, backrests and footrests so that each individual can pick the style and combination of products that best meets their needs. Keeping you comfortable is our goal and you can be sure that our products will work as hard as you do.

Personal Comfort is one of five Safco catalogs being offered this year. We invite you to request a copy of our Seating Solutions, Workplace Organization, Art & Engineering and Facility Essentials catalogs. As you browse through these books, I'm sure you'll see how we've dedicated ourselves to "Creating Your Comfort Zone" throughout the workplace.

Sincerely,



Dan Zdon
General Manager



Table of Contents

Page 4-5

Keyboard Arms



Page 6-8

Keyboard Drawers



Page 9

Monitor Risers & Accessories



Page 10-11

Wrist Rests & Mouse Pads



Page 12-13

Back /Foot Rests & Seat Cushions



Page 14

Copy/ CPU Holders



Keyboard Arms



A

Ergo-Comfort™ Articulating Keyboard Arms

Choice of four models to fit individual needs and preferences. Features include 6" height adjustment, 360° rotation, keyboard tilt and smooth operating glide track. Articulating keyboard arms with mouse trays include a clear Lexan® mouse surface that lifts up to place photos, memos, meeting reminders, etc. Therasoft® wrist rests distribute weight while helping to minimize pressure points and improving circulation. Attractive Black Granite fleck finish. All models meet BIFMA standards.

A. Premium Articulating Keyboard/Mouse Arm

Conveniently placed spring-assist LeverLock™ height adjustment and pull-latch for +15° to -15° tilt angle adjustment. Slide-out mouse tray for right or left handed use. 17" deep track. Mouse tray is 8¾"W x 8½"D.

Model	Color	Keyboard W x D
2139	Black Granite Fleck	21¾ x 11¾



B

B. Deluxe Articulating Keyboard/Mouse Arm

Wing-style thin phenolic platform can be mounted with mouse surface to the right or left. Star knob height adjustment. Convenient pull-latch for +15° to -15° tilt angle adjustment. 21" deep track.

Model	Color	Keyboard W x D
2140	Black Granite Fleck	29½ x 14⅝



C

C. Articulating Corner Keyboard/Mouse Arm

Conveniently placed height adjustment lever without spring-assist and a pull-latch for +15° to -15° tilt adjustment. 2-6" extension bracket allows keyboard platform to extend beyond corners. Slide out mouse tray for left or right hand use. 21" deep track. Mouse tray is 8¾"W x 8½"D.

Model	Color	Keyboard W x D
2141	Black Granite Fleck	21¾ x 11¾

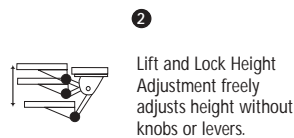
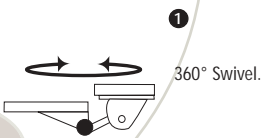


D

D. Articulating Standard Keyboard Arm

Single star knob adjusts both height and +15° to -15° tilt. Unit features 17" track.

Model	Color	Keyboard W x D
2142	Black Granite Fleck	21¾ x 11¾



Ergo-Comfort™ Articulating Keyboard Arms

Low profile design provides maximum knee clearance. Simply lift and release to adjust height...no knobs or levers. Units extend and retract smoothly on a 21" glide track. Easy access adjustment knob for a +15° to -15° tilt range. Full 360° rotation. Meets BIFMA standards.

A. Multi-Position Keyboard Arm with Mouse Platform

Features multiple adjustment options that allow both keyboard and mouse platforms to be easily adjusted to the most comfortable position for the user. Mouse platform easily snaps in for right or left handed use and can be positioned in line with the keyboard platform or in a mouse-forward configuration. Entire keyboard/mouse platform can be shifted left or right for preferred arrangement and increased stability. Fits corner workspace areas as small 17" x 6" height adjustment range. Contoured foam wrist rest included. Black steel keyboard and mouse tray.

Model	Color	W x D
2197	Black	(Keyboard Tray) 20 ¹ / ₄ x 8 ¹ / ₄ " (Mouse Tray) 6 x 10 ¹ / ₄ "

B. Sit/Stand Articulating Keyboard/Mouse Arm

10¹/₂" height range allows you to use your keyboard and mouse while seated or standing up. Simply lift and release the tray to adjust. Wide platform provides space for both keyboard and mouse. Exclusive Therasoft® wrist rest distributes weight to minimize pressure points while improving circulation.

Model	Color	W x D
2196	Black Granite Fleck	27 ⁷ / ₈ x 11 ³ / ₄

Ergo-Comfort™ Freestyle Articulating Keyboard Platforms

Provides maximum comfort for people who key all day. Lift-n-Lock™ 6" height adjustment by simply lifting the keyboard tray. Easy access tilt adjustment knob for 30° tilt range adjusts from a +15° to -15° for reverse angle. Full 360° rotation. Smooth movement on a 21" precision glide track. Low profile mechanism provides maximum clearance for knees. Clear lift-up Lexan® mouse surface displays pictures, memos, etc. to personalize workspace. Exclusive Therasoft® wrist rest distributes weight to minimize pressure points while improving circulation. Black Granite fleck finish. Meets BIFMA standards.

C. Articulating Keyboard Arm with Mouse Platform

Mouse tray tilts and swivels for preferred position and plugs in either side of keyboard platform for right or left hand use. Mouse platform is 8³/₈" square.

Model	Color	W x D
2136	Black Granite Fleck	21 ³ / ₄ x 11 ³ / ₄

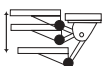
D. Articulating 28" Keyboard/Mouse Arm

Wide, ultra-thin platform provides sufficient keyboard and mouse surface for left or right hand use.

Model	Color	W x D
2137	Black Granite Fleck	27 ⁷ / ₈ x 11 ³ / ₄

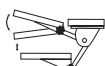


5



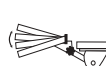
Independent Height Adjustment Knob: Single knob adjusts height.

6



Dual Adjustment: Single knob adjusts height and tilt angle.

7



Independent Tilt Adjustment Knob: Adjusts tilt independently of height adjustment.

8



Pull-Latch Tilt Adjustment: Convenient fingertip pull adjusts tilt.

Keyboard Arms



A

1 6



A. Clamp Style Keyboard Arm

Strong steel mechanism installs under a work surface to keep keyboard readily available. The keyboard is securely clamped on its cantilevered platform for a solid, positive feel. Keyboard clamp adjusts from 5³/₄" to 9³/₈" to accept most keyboards. Single star knob control adjusts both height and tilt. Full 30° keyboard tilt range from +15° to -15°. 6" height adjustment range. 17" glide track for smooth motion. Includes molded polyurethane wrist rest.

Model	Color	Keyboard W x D
2138	Black	--

B



B. Articulating Mouse Tray

Tilts, adjusts up and down and swivels 180° to create the ideal mouse platform location for any user. Extends 9". Slides completely under work surface. Steel construction with nylon covered foam mouse rest.

Model	Color	W x D x H
2103	Black	8 x 8 x ⁵ / ₈ "

C

1 5 8



SoftSpot® Forearm Support Systems

Exclusive Therasoft® cushioning material distributes weight, helps minimize pressure points and improves circulation. Non-abrasive, durable, anti-static and latex free. Available in two styles.

C. Articulating Forearm Platform

Holds both keyboard and mouse providing forearm support to promote good posture and relieve neck and shoulder tension. Soft, sculpted Therasoft® foam pads guide arm placement while keeping wrists in a neutral position. Convenient pull-latch for tilt angle adjustment. Full 25° tilt range -15° to 10°. 6" height adjustment with star knob control. Unit features a full 360° rotation. Smooth Teflon glide mechanism on 21" track. Generous sized mouse pad surface. Attractive Black Granite fleck finish.

Model	Color	Keyboard W x D x H
2195	Black	24 x 20 x 6

D



D. Forearm Support

Ergonomic design supports forearms to relieve tension in the neck and shoulders. The SoftSpot® foam pads guide arm placement and keep wrists in a neutral position. Exclusive Therasoft® cushioning material distributes weight, helps minimize pressure points and improves circulation. Non-abrasive, durable and anti-static. Attaches quickly and easily, with two manual adjustments knobs, to desk or work surface that is 1" to 1¹/₂" thick

Model	Color	W x D x H
2190	Black	32 ¹ / ₂ x 12 x 4 ¹ / ₂ "

Keyboard Drawers

Ergo-Comfort™ Desktop Keyboard Drawers

Furniture quality housing raises monitor for a more comfortable viewing angle. Supports monitors up to 21" (80 lbs.). Sturdy keyboard drawer is mounted on roller glides for smooth operation. Drawer locks into keying position and slides under monitor when not in use. Unit features rubber feet to protect surfaces. No assembly required.

A. Premium Desktop Keyboard Drawer with Slide-Out Mouse Surface

Soft-grip handle for convenient access. Mouse tray slides out for left or right hand use. Clear Lexan® mouse surface lifts up to display photos, meeting reminders, memos, etc. Drawer features a lift out wrist rest to accommodate ergonomic keyboards.

Model	Color	W x D x H
2212	Charcoal	28 ³ / ₄ x 19 ¹ / ₂ x 6 ³ / ₄

B. Standard Desktop Keyboard Drawer

Foam padded wrist rest removes to accommodate ergonomic keyboards.

Model	Color	W x D x H
2214	Light Gray	28 ³ / ₄ x 19 ¹ / ₂ x 6 ³ / ₄

C. Desktop Keyboard Station with Drawer

Convenient storage bins hold pens, pencils and other supplies. Padded wrist rest provides soothing support while encouraging correct wrist positioning for the user.

Model	Color	W x D x H
2216	Light Gray	26 ¹ / ₄ x 19 ¹ / ₄ x 5

D. Keyboard Station with Drawer

Durable, wood laminate keyboard/mouse drawers clear desktop space for other activities. Accommodates most standard and ergonomic keyboards. Drawers slide smoothly and lock into keying position. Clear, lift-up Lexan® mouse surface displays photos to personalize work area. Includes keyboard and mouse foam wrist rests. Light Gray laminate finish.

Model	W x D x H
2218	29 ³ / ₈ x 16 ⁵ / ₈ x 4 ³ / ₈

E. Keyboard Station

Raises monitors to a more comfortable viewing height while storing keyboard below to free up work surface. Supports monitors up to 21" (80 lbs.). Stores keyboards up to 21¹/₂"W x 9³/₄"D x 3¹/₂"H. Wood laminate construction in Light Gray. No assembly required.

Model	W x D x H
2155GR	26 ¹ / ₄ x 19 ¹ / ₄ x 5



Keyboard Drawers



NEW!

A

Ergo-Comfort™ Underdesk Keyboard Drawers

Helps computer users work more comfortably all day long. Convenient keyboard trays mount directly under any surface enabling valuable desk space to be freed up for other activities. Drawers lock into keying position on ball bearing glides for smooth movement in and out. Mounting hardware is included.

A. Premium Underdesk Keyboard Drawer with Slide-Out Mouse Surface

Unit features three height positions with two tilt adjustments. Mouse tray slides out for right or left hand use. Clear Lexan® mousing surface lifts up to display meeting reminders, memos or personal photos. Soft-grip drawer handle provides easy access to the keyboard drawer. Padded wrist rest is removable to accommodate ergonomic keyboards. Mounting area measures 25¹/₈"W x 16"D.

Model	Color	W x D x H
2213	Charcoal	23 ³ / ₄ x 16 ¹ / ₂ x 3 ¹ / ₄



NEW!

B

B. Standard Underdesk Keyboard Drawer

Features three height positions with two tilt adjustments. Foam padded wrist rest is removable to accommodate ergonomic keyboards. Mounting area is 25¹/₈"W x 16"D.

Model	Color	W x D x H
2215	Light Gray	23 ³ / ₄ x 16 ¹ / ₂ x 3 ¹ / ₄



NEW!

C

C. Underdesk Keyboard Drawer

Convenient storage bins hold pens, pencils or other supplies. Padded wrist rest provides soothing support while encouraging correct wrist positioning for the user. Mounting area is 22¹/₄"W x 15³/₄"D.

Model	Color	W x D x H
2217	Light Gray	22 ¹ / ₄ x 15 ³ / ₄ x 2



NEW!

D

D. Underdesk Keyboard/Mouse Drawer

Durable, wood laminate keyboard/mouse drawers clear desktop space for other activities. Accommodates most standard and ergonomic keyboards. Drawers slide smoothly and lock into keying position. Clear, lift-up Lexan® mouse surface displays photos to personalize work area. Includes Keyboard and mouse foam wrist rests. Light Gray laminate finish.

Model	W x D x H
2219	27 x 15 ³ / ₄ x 3 ³ / ₄



NEW!

E

Acrylic Keyboard Station & Printer Stand

E. Acrylic Printer Stand

Clear acrylic stand in a clean, simple design complement any environment. Lifts printers off surface to provide storage beneath. Holds up to two reams of paper with a convenient envelope compartment. Supports equipment weighing up to 40 lbs. Packed 6 per carton.

Model	W x D x H
2165	16 x 11 ³ / ₄ x 7 ⁷ / ₈



NEW!

F

F. Acrylic Keyboard Station

Conserves space while lifting monitor to a comfortable viewing position. Clean acrylic stand supports monitors up to 80 lbs. while storing keyboards up to 21"W x 9"D x 3"H beneath. Packed 6 per carton

Model	W x D x H
2167	21 ¹ / ₂ x 14 ⁷ / ₈ x 3 ¹ / ₄

Monitor Risers & Accessories

Ergo-Comfort™ Monitor Risers

Three styles to fit individual preferences. All lift monitors to a more comfortable viewing height while providing storage for files and desktop accessories. Large 14¹/₄"W x 12"D platforms support monitors up to 21" (60 lbs. maximum). Each features integrated cable management and anti-slip feet to protect work surfaces. Contemporary wave design with Light Gray finish.

A. Stackable Monitor Riser

Raises monitors off desk surface 2¹/₂". Multiple units can be stacked to attain the height needed for individual comfort, while creating a sorter for your papers. Packed 6 per carton.

Model	W x D x H
2201	14 ¹ / ₄ x 12 ⁷ / ₈ x 2 ¹ / ₂

B. Mid-Range Monitor Riser

Raises monitors 5¹/₄" off surface for a more comfortable viewing position. Sturdy base stores paper and other supplies. Packed 6 per carton.

Model	W x D x H
2202	14 ¹ / ₄ x 12 ⁷ / ₈ x 5 ¹ / ₄

C. Monitor Riser/Organizer

Lifts monitors 7¹/₂". Large 5⁵/₈"H storage drawer slides under platform and provides convenient storage for CD's and other items while built-in tray holds pens, pencils and paper clips. Side accessory tray provides additional storage. Carton of 6.

Model	W x D x H
2203	14 ¹ / ₄ x 12 ⁷ / ₈ x 7 ¹ / ₂

D. Heavy-Duty Monitor Arm

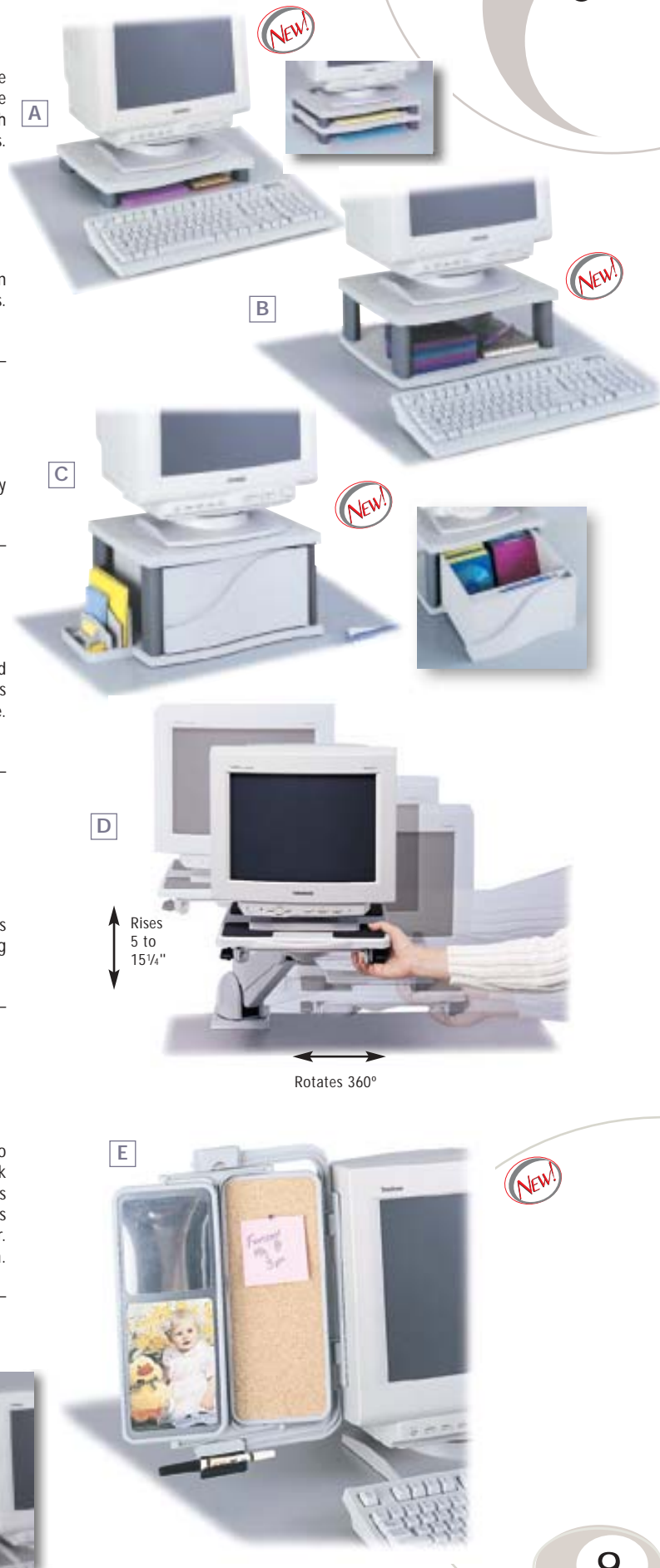
Heavy-duty unit supports up to 80 lbs. Lifts monitor from 5" to 15¹/₄" and allows the user to rotate the monitor 360° to attain the most comfortable working position. Clamps to any work surface up to 2⁵/₈" thick.

Model	Color	W x D x H
2107	Light Gray	Tray measures 13 ³ / ₈ x 11 ⁷ / ₈ x 3 ³ / ₄

E. Monitor Organizer/Copyholder

Creates easy access to essential tools and helps to keep you organized. Two 4³/₄"W x 11¹/₂"H panels turn independently to provide dry-erase boards, a cork board, mirror and photo display. Plus, easy to use copy holder places documents at eye level. Folds out of the way against the monitor when not in use. Mounts on either side of the monitor with double-face tape. Includes white board eraser. Displays up to 4" x 6" photos. Light Gray. Easy assembly. Packed 6 per carton.

Model	Color	W x D x H
2210	Light Gray	10 ¹ / ₂ x 1 ¹ / ₄ x 15



Wrist Rests & Mouse Pads



A



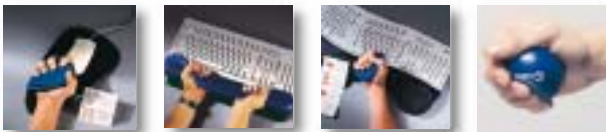
B



C



D



All Proline and Contour pads can be removed to double as squeeze exercise devices.



E



F

SoftSpot® Squeeze Therapy Wrist Support Systems



The SoftSpot "Squeeze Therapy System™" allows you to take a proactive approach to good health by performing a series of stretching and strengthening exercises while at your computer. The exercises take only minutes and can help reduce the risk of injury while promoting a healthy break from your routine. An illustrated exercise guide is included with each support. SoftSpot products are latex free. Exclusive Therasoft® cushioning material distributes weight, helps minimize pressure points and improves circulation. Non-abrasive, durable and anti-static.

A. Proline Mouse Pad Wrist Support

Form-fitting contours cradle your wrist — tracking surface acts as a smooth platform for a variety of pointing devices: mouse, trackball, joystick, touchpad etc. 10 per carton.

Royal Blue	Violet	Raspberry	Black	W x D x H
901-02	901-04	901-07	901-08	7½ x 13 x 1⅓"

B. Proline Keyboard Wrist Support

Removable pad can be rotated to suit your needs, reversing its form fitting contours for positive or negative positioning. 10 per carton.

Royal Blue	Violet	Raspberry	Black	W x D x H
902-02	902-04	902-07	902-08	18 x 3½ x 1⅓"

C. Contour Wrist Support

Features a form-fitting cushion that maximizes the benefits of natural style keyboards. 10 per carton.

Royal Blue	Violet	Raspberry	Black	W x D x H
920-02	920-04	920-07	920-08	21¼ x 4¾ x 1½"

D. SqueezeBall

A Therasoft® squeezable ball designed to help relieve stress. 24 per carton.

Royal Blue	W x D x H
401-02	2½" Dia.

SoftSpot® Vantage Wrist Supports

Advanced ergonomic support at an economy price. Therasoft® cushioning material distributes weight, helps minimize pressure points and improves circulation. Non-abrasive, durable and anti-static.

E. Vantage Mousepad

Provides a smooth platform for use with a mouse, trackball, joystick, touchpad etc. Ensures a natural, neutral position to reduce strain and fatigue. 10 per carton.

Royal Blue	Violet	Raspberry	Black	W x D x H
801-02	801-04	801-07	801-08	7⅞ x 10¾ x ⅝"

F. Vantage Keyboard Wrist Support

Can be rotated to reverse its form fitting contours for positive or negative positioning. 10 per carton.

Royal Blue	Violet	Raspberry	Black	W x D x H
802-02	802-04	802-07	802-08	18¼ x 3 x 1"

Wrist Rests & Mouse Pads

Remedease™ Wrist Supports

Made from soft tapered foam covered with suede nylon fabric - seamless, extra-soft for a luxurious feel. No seams to irritate wrists. Choose from keyboard, mouse pad or combination styles to meet individual preferences. Available in Black, Gray and Plum.

A. Keyboard Wrist Rest Strips

Non-slip foam bottoms for easy repositioning on any surface. Ideal for use with a keyboard, mouse, calculator, etc. 24 per carton.

Black	Gray	Plum	W x D x H
2115BL	2115GR	2115PL	18 1/4 x 3 x 1"

B. Mouse Pad Wrist Rest Strips

Non-slip foam bottoms securely holds it position on any surface. Ideal for use with a mouse, calculator, etc. 24 per carton.

Black	Gray	Plum	W x D x H
2100BL	2100GR	2100PL	8 x 3 x 1"

C. Combination Wrist Rest

Use one wrist rest for both keyboard and mouse. Fits under standard 19" keyboards and provides room for your mouse too. Foam on the bottom protects work surface and prevents slipping. Allows for left or right mousing. 12 per carton.

Black	Gray	Plum	W x D x H
2123BL	2123GR	2123PL	28 x 10 x 1"

D. Remedease™ Single Wrap Wrist Support

Solid support for your hand and wrist. Comfortable design allows full finger movement. Neoprene warms muscles while soft absorbent lining keeps you cool. Fits left or right hand. Size: For correct fit, measure smallest part of wrist. Available in Black. 5 per carton.

Model	Size	Fits Wrist
47111	Small	5 1/2 - 6 1/2"
47121	Medium	6 1/2 - 7 1/2"
47131	Large	7 1/2 - 8 1/2"
47141	XLarge	8 1/2 - 9 1/2"

E. Remedease™ Double Wrap Wrist Support

Full support for your hand, wrist and forearm. Comfortable design allows full finger movement. Fits left or right hand. Size: For correct fit, measure smallest part of wrist. Available in Black. 5 per carton.

Model	Size	Fits Wrist
47211	Small	5 1/2 - 6 1/2"
47221	Medium	6 1/2 - 7 1/2"
47231	Large	7 1/2 - 8 1/2"
47241	XLarge	8 1/2 - 9 1/2"

F. Remedease™ Elbow Support

Provides support to forearm when performing repetitive elbow and arm movements. Abrasion-resistant, breathable, closed cell neoprene compresses and warms muscles for comfort. Adjustable, flexible cinch strap. Soft, absorbent lining lifts moisture away from skin. Durable materials and construction are machine washable. Fits right or left arm. For correct fit, measure widest part of forearm, 3" below elbow. Available in Black. 5 per carton.

Model	Size	Fits Forearm
47411	Small	9 - 10"
47421	Medium	10 - 11"
47431	Large	11 - 12"
47441	XLarge	12 - 13"



Keyboard Strip

A



Mouse Pad Strip



B



C



D



E

Back Rests



A



B



C



D



E



F

Remedease™ Back Rests

These high quality, supportive back rests help minimize back strain and fatigue. High-density medical-grade, anti-allergenic foam retains its shape to keep users comfortable for long periods of time. Remedease Back Rests come in four styles to fit any type of chairs. Each unit comes with a soft, durable, machine washable cover.

A. High Profile Back Rest

Deeply contoured, maximum support for the lower back. Removable and machine washable 100% Polyester velour cover. 5 per carton.

Black	Gray	W x D x H
71491	71493	13 x 4½ x 12½"

B. Low Profile Back Rest

Support for lower back in chairs with smaller seat area. Removable and machine washable 100% Polyester velour cover. 5 per carton.

Black	Gray	W x D x H
71411	71413	14 x 3½ x 12½"

C. Lumbar Roll

Direct support for the sensitive lumbar "small of back" region. Removable and machine washable 100% Polyester velour cover. 5 per carton.

Black	Gray	W x D x H
71101	71103	11½ x 2½ x 5"

D. Full Height Back Rest

20" height low profile design for full back support. Removable and machine washable 100% Polyester velour cover. 5 per carton.

Black	Gray	W x D x H
71301	71303	14 x 3 x 20"

SoftSpot® Back Rests

Cushions and supports the lower back and spine reducing strain and fatigue. Helps to prevent injury by promoting proper seating posture. Upper edges are softly curved to reduce pressure points by gradually tapering away from the user. Unique center channel prevents pressure points on the spine. Contoured Therasoft® material retains its shape and provides maximum support. Non-abrasive, anti-static and washable. Elastic strap adjusts to fit any chair.

E. Low Profile Back Rest

Provides maximum support for the lower back region. 5 per carton.

Black	Blue	W x D x H
7151BL	7151BU	13⅞ x 2⅝ x 11"

F. Lumbar Roll Back Rest

Provides direct support for the lumbar "small of back" region. 5 per carton.

Black	Blue	W x D x H
7150BL	7150BU	13⅞ x 2⅝ x 8"

Seat Cushions & Foot Rests

A. SoftSpot® Seat Cushion

The perfect companion to the the SoftSpot back rests. The exclusive Therasoft® cushioning material combined with softly curved edges distribute weight and help to minimize pressure points. Cushions and supports the lower back and spine, reducing strain and fatigue. Cut-away contours slope away from pressure points at the coccyx (tailbone). Wedge shape helps promote proper seating posture to maintain the spines natural "S" shaped curve. Non-abrasive, anti-static and washable. Available in Black(BL). Packed 5 per carton

Model	Color	W x D x H
7152BL	Black	15½ x 10 x 3"

A



Foot Cushions and Foot Rests

Choice of three styles that help improve circulation by elevating feet and encouraging good posture.

B. Remedease™ Foot Cushions

Unique half-cylinder design allows a multitude of foot positions to ensure total comfort in any seated position. Hypo-allergenic medical-grade foam distributes weight evenly. Nylon cover with non-slip tread on the bottom is removable and machine washable. Twenty-one strategically placed magnets (700 gauss each) create a bi-polar field for magnetic therapy. Also available in a non-magnetic version. 5 per carton.

Model	Style/Color	W x D x H
92301	Magnetic - Black	18 x 12 x 6"
92311	Non-Magnetic - Black	18 x 12 x 6"

B



C



C. Adjustable Footrest with Lock

Two position height adjustment, 4½" to 5½". Tilt angle is fully adjustable from +45° to -45° and easily locks into desired position. Platform is 16¼"W x 12"D. Constructed of sturdy high-impact polystyrene. Non-skid base. 6 per carton.

Model	Color	W x D x H
2117	Black	20 x 12 x 5¾ - 7"

D. Adjustable Footrests

Elevates feet, improves circulation and allows shoulders to relax backwards. Choice of two heights. Easy-glide design allows repositioning while in use. 2105 - 5 per carton, 2106 - 4 per carton.

Model	Color	W x D x H
2105	Black	18½ x 11½ x 5"
2106	Black	18½ x 11½ x 8"

D



Copy Holders/CPU Holders

New!



A

Ergo-Comfort™ Copy Holders

A. Read/Write Copy Stand

Wood copy stand designed to hold books, larger documents or spreadsheets. 5/8" wood construction with durable laminate finish. Two angle adjustment options for preferred positioning. 1" lip to hold documents or books. Packed 6 per carton.

Model	Color	W x D x H
2156	Light Gray	19 ⁵ / ₈ x 11 ³ / ₄ x 5 ³ / ₄ to 6 ¹ / ₄ "

B. Desk Top Copy Holder

Reduces neck strain and eye fatigue. Holds up to 20 pages, letter or legal size documents securely. Non-magnetic, anti-static surface with adjustable transparent line guide. Weighted base. 6 per carton.

Model	Color	W x D x H
2113	Putty	Document Holder, 10 ³ / ₄ x 15 15 ⁷ / ₈ "



B

C. Extended Arm Copy Holder

Extends, tilts and rotates. Holds up to 20 pages, letter or legal size documents securely. Non-magnetic, anti-static surface with adjustable line guide. Fits surfaces up to 2 1/4" thick. 6 per carton.

Model	Color	W x D x H
2108	Putty	Document Holder, 9 ³ / ₈ x 13 ¹ / ₂ x 15 ⁷ / ₈ "



E

New!



D

Ergo-Comfort™ CPU Holders

UnderDesk Mount CPU Holder

Free-up your desktop while keeping your CPU off the floor and above the dust. Mounting the CPU under the desktop keeps it readily accessible. Anti-skid pads keep the CPU in place preventing it from sliding out of position. Both units adjust vertically 13" to 22", and side to side 5 1/4" to 9". Steel construction for durability.

D. Swivel-Mount CPU Holder

Extends out 6" on smooth operating ball bearing glides. Swivels 180° for left or right cable access. Supports up to 60 lbs. Black finish.

Model	Color	W x D x H
2175	Black	8 ³ / ₄ -13 x 9 ¹ / ₂ x 17 ¹ / ₂ -25 ¹ / ₄ "

Fixed-Mount Holder

(Not shown.) Supports up to 60 lbs. Black finish.

Model	Color	W x D x H
2176	Black	7 ⁷ / ₈ -12 ⁵ / ₈ x 9 ¹ / ₂ x 14 ³ / ₄ -23 ³ / ₄ "

E. Economy CPU Stand

Durable plastic stand keeps computer off the floor and above dust. Foam pads securely grip side of CPU. Expands from 4 5/8" to 7" wide. 6 per carton.

Model	Color	W x D x H
2116	Putty	4 ⁵ / ₈ to 7 x 12 x 4"



E

Model #	Pg.	Model #	Pg.	Model #	Pg.
2100	.11	2202	.9	71413	.12
2103	.6	2203	.9	71491	.12
2105	.13	2210	.9	71493	.12
2106	.13	2212	.7	7150	.12
2107	.9	2213	.8	7151	.12
2108	.14	2214	.7	7152	.13
2113	.14	2215	.8	80102	.10
2115	.11	2216	.7	80104	.10
2116	.14	2217	.8	80107	.10
2117	.13	2218	.7	80108	.10
2123	.11	2219	.8	80202	.10
2136	.5	40102	.10	80204	.10
2137	.5	47111	.11	80207	.10
2138	.6	47121	.11	80208	.10
2139	.4	47131	.11	90102	.10
2140	.4	47141	.11	90104	.10
2141	.4	47211	.11	90107	.10
2142	.4	47221	.11	90108	.10
2155	.7	47231	.11	90202	.10
2156	.14	47241	.11	90204	.10
2165	.8	47411	.11	90207	.10
2167	.8	47421	.11	90208	.10
2175	.14	47431	.11	92002	.10
2176	.14	47441	.11	92004	.10
2190	.6	71101	.12	92007	.10
2195	.6	71103	.12	92008	.10
2196	.5	71301	.12	92301	.13
2197	.5	71303	.12	92311	.13
2201	.9	71411	.12		

